

TALDO1 Polyclonal Antibody

Catalog No.	A6762	Category	Polyclonal Antibodies
Applications	WB, IF	Observed MW	38kDa
Cross-reactivity	Human, Mouse	Calculated MW	37kDa

Immunogen Information

Immunogen	Recombinant fusion protein containing a sequence corresponding to amino acids 1-337 of human TALDO1 (NP_006746.1).
Gene ID	6888
Swiss prot	P37837
Synonyms	TALDO1; TAL; TAL-H; TALDOR; TALH; transaldolase

Product information

Source	Rabbit
Isotype	IgG
Purification method	Affinity purification
Storage	Store at -20°C. Avoid freeze / thaw cycles. Buffer: PBS with 0.02% sodium azide, 50% glycerol, pH7.3.

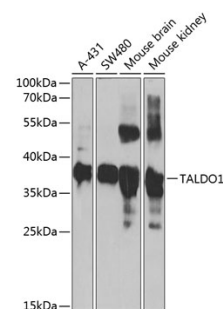
Background

Transaldolase 1 is a key enzyme of the nonoxidative pentose phosphate pathway providing ribose-5-phosphate for nucleic acid synthesis and NADPH for lipid biosynthesis. This pathway can also maintain glutathione at a reduced state and thus protect sulfhydryl groups and cellular integrity from oxygen radicals. The functional gene of transaldolase 1 is located on chromosome 11 and a pseudogene is identified on chromosome 1 but there are conflicting map locations. The second and third exon of this gene were developed by insertion of a retrotransposable element. This gene is thought to be involved in multiple sclerosis.

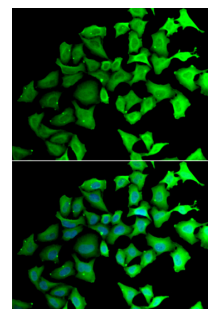
Recommended Dilutions

WB 1:500 -
1:2000

IF 1:10 -
1:100



Western blot - TALDO1 Polyclonal Antibody (A6762)



Immunofluorescence - TALDO1 Polyclonal Antibody (A6762)