

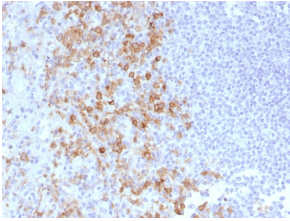
## Anti-CD162 Antibody [PSGL1/1601] (A249952)

### Specifications:

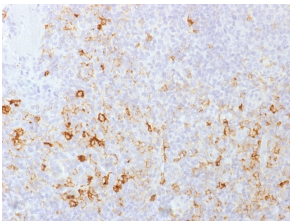
Name:	Anti-CD162 Antibody [PSGL1/1601]
Description:	Mouse monoclonal [PSGL1/1601] antibody to CD162.
Applications:	IHC-P
Recommended Dilutions:	IHC-P: 1-2 µg/ml
Reactivity:	Human
Immunogen:	Recombinant human CD162 protein.
Host:	Mouse
Clonality:	Monoclonal
Clone ID:	PSGL1/1601
Isotype:	IgG1
Light Chains:	kappa
Conjugate:	Unconjugated
Purification:	Protein A/G chromatography.
Concentration:	200 µg/ml
Product Form:	Liquid
Formulation:	Supplied in 10mM Phosphate Buffered Saline with 0.05% BSA and 0.05% Sodium Azide.
Storage:	Shipped at 4°C. Upon delivery aliquot and store at -20°C. Avoid freeze / thaw cycles.
General Notes:	This monoclonal antibody is also available in a different formulation without BSA and Sodium Azide - Anti-CD162 Antibody [PSGL1/1601] - BSA and Azide free (A253132).
Disclaimer:	This product is for research use only. It is not intended for diagnostic or therapeutic use.

## Anti-CD162 Antibody [PSGL1/1601] (A249952)

### Images:



Immunohistochemical analysis of formalin-fixed, paraffin-embedded human spleen using Anti-CD162 Antibody [PSGL1/1601].



Immunohistochemical analysis of formalin-fixed, paraffin-embedded human tonsil using Anti-CD162 Antibody [PSGL1/1601].