

## Phospho-RELA-S276 pAb

<b>Catalog No.</b>	AP0123	<b>Category</b>	Phosphorylated Antibodies
<b>Applications</b>	WB, IHC, IF	<b>Observed MW</b>	60kDa
<b>Cross-reactivity</b>	Human, Mouse, Rat	<b>Calculated MW</b>	58kDa/59kDa/60kDa

### Immunogen Information

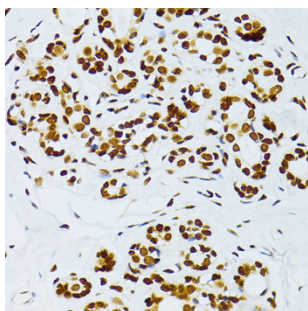
<b>Immunogen</b>	A synthetic phosphorylated peptide around S276 of human RELA (NP_068810.3).
<b>Gene ID</b>	5970
<b>Swiss prot</b>	Q04206
<b>Synonyms</b>	RELA; NFKB3; p65; transcription factor p65

### Product information

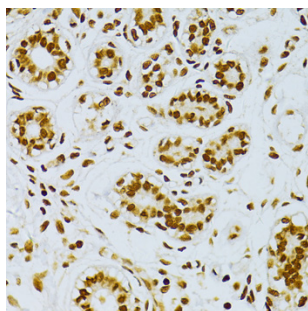
<b>Source</b>	Rabbit
<b>Isotype</b>	IgG
<b>Purification method</b>	Affinity purification
<b>Storage</b>	Store at -20°C. Avoid freeze / thaw cycles. Buffer: PBS with 0.02% sodium azide, 50% glycerol, pH7.3.

### Background

NF-kappa-B is a ubiquitous transcription factor involved in several biological processes. It is held in the cytoplasm in an inactive state by specific inhibitors. Upon degradation of the inhibitor, NF-kappa-B moves to the nucleus and activates transcription of specific genes. NF-kappa-B is composed of NFKB1 or NFKB2 bound to either REL, RELA, or RELB. The most abundant form of NF-kappa-B is NFKB1 complexed with the product of this gene, RELA. Four transcript variants encoding different isoforms have been found for this gene.



Immunohistochemistry - Phospho-RELA-S276 pAb (AP0123)



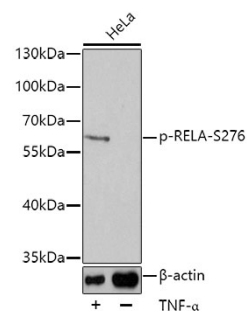
Immunohistochemistry - Phospho-RELA-S276 pAb (AP0123)

### Recommended Dilutions

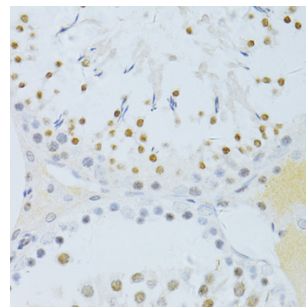
WB 1:500 -  
1:2000

IHC 1:50 -  
1:100

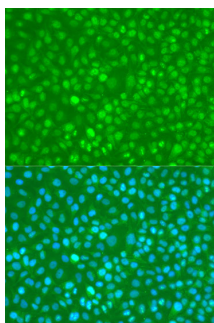
IF 1:20 - 1:50



Western blot - Phospho-RELA-S276 pAb (AP0123)



Immunohistochemistry - Phospho-RELA-S276 pAb (AP0123)



Immunofluorescence - Phospho-RELA-S276 pAb (AP0123)