

## PARK2 Polyclonal Antibody

<b>Catalog No.</b>	A11172	<b>Category</b>	Polyclonal Antibodies
<b>Applications</b>	WB, IF	<b>Observed MW</b>	52kDa
<b>Cross-reactivity</b>	Human, Mouse	<b>Calculated MW</b>	23kDa/30-51kDa

### Immunogen Information

<b>Immunogen</b>	Recombinant fusion protein containing a sequence corresponding to amino acids 1-300 of human PARK2 (AAH22014.1).
<b>Gene ID</b>	5071
<b>Swiss prot</b>	O60260
<b>Synonyms</b>	PRKN; AR-JP; LPRS2; PARK2; PDJ; E3 ubiquitin-protein ligase parkin

### Product information

<b>Source</b>	Rabbit
<b>Isotype</b>	IgG
<b>Purification method</b>	Affinity purification
<b>Storage</b>	Store at -20°C. Avoid freeze / thaw cycles. Buffer: PBS with 0.02% sodium azide, 50% glycerol, pH7.3.

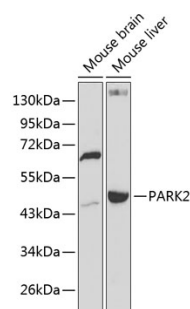
### Background

The precise function of this gene is unknown; however, the encoded protein is a component of a multiprotein E3 ubiquitin ligase complex that mediates the targeting of substrate proteins for proteasomal degradation. Mutations in this gene are known to cause Parkinson disease and autosomal recessive juvenile Parkinson disease. Alternative splicing of this gene produces multiple transcript variants encoding distinct isoforms. Additional splice variants of this gene have been described but currently lack transcript support.

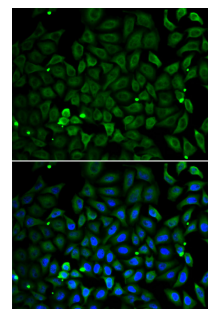
### Recommended Dilutions

WB 1:500 -  
1:2000

IF 1:50 -  
1:200



Western blot - PARK2 Polyclonal Antibody (A11172)



Immunofluorescence - PARK2 Polyclonal Antibody (A11172)