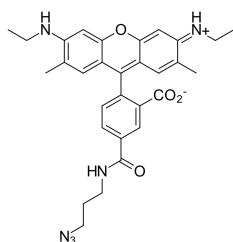


R6G azide, 5-isomer (A270258)

Specifications:

Name:	R6G azide, 5-isomer
Description:	R6G (rhodamine 6G) is a yellow emitting xanthene dye. It has been used for DNA sequencing before. Now this dye is often used for qPCR. This is a pure 5-isomer of R6G with azide group.
Absorption Maxima:	519 nm
Extinction Coefficient:	116000 M ⁻¹ cm ⁻¹
Emission Maxima:	546 nm
Fluorescence Quantum Yield:	0.95
CF ₂₆₀ :	0.18
CF ₂₈₀ :	0.17
Mass Spec M ⁺ Shift after Conjugation:	540.3
Purity:	95% (by ¹ H NMR and HPLC-MS).
Molecular Formula:	C ₃₀ H ₃₂ N ₆ O ₄
Molecular Weight:	540.61 kDa
Product Form:	Orange to brown powder.
Solubility:	Good in DMF, DMSO, and alcohols.
Storage:	Shipped at room temperature. Upon delivery, store in the dark at -20°C. Avoid prolonged exposure to light. Desiccate.
Disclaimer:	This product is for research use only. It is not intended for diagnostic or therapeutic use.

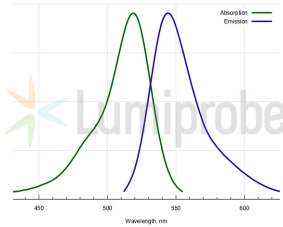
Images:



Structure of 5-R6G azide.

R6G azide, 5-isomer (A270258)

Images continued:



Absorption and emission spectra for 5-R6G.