

## CDH2 Polyclonal Antibody

<b>Catalog No.</b>	A0432	<b>Category</b>	Polyclonal Antibodies
<b>Applications</b>	WB, IHC, IF	<b>Observed MW</b>	140kDa
<b>Cross-reactivity</b>	Mouse, Rat	<b>Calculated MW</b>	97kDa/99kDa

### Immunogen Information

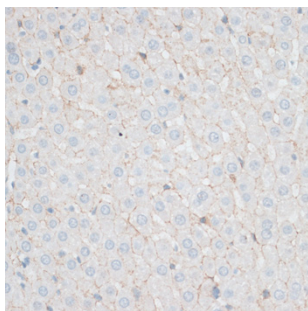
<b>Immunogen</b>	A synthetic peptide corresponding to a sequence within amino acids 450-550 of human CDH2 (NP_001783.2).
<b>Gene ID</b>	1000
<b>Swiss prot</b>	P19022
<b>Synonyms</b>	CDH2; CD325; CDHN; CDw325; NCAD; cadherin-2

### Product information

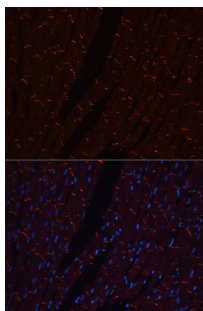
<b>Source</b>	Rabbit
<b>Isotype</b>	IgG
<b>Purification method</b>	Affinity purification
<b>Storage</b>	Store at -20°C. Avoid freeze / thaw cycles. Buffer: PBS with 0.02% sodium azide, 50% glycerol, pH7.3.

### Background

This gene encodes a classical cadherin and member of the cadherin superfamily. Alternative splicing results in multiple transcript variants, at least one of which encodes a preproprotein is proteolytically processed to generate a calcium-dependent cell adhesion molecule and glycoprotein. This protein plays a role in the establishment of left-right asymmetry, development of the nervous system and the formation of cartilage and bone.



Immunohistochemistry - CDH2 Polyclonal Antibody (A0432)



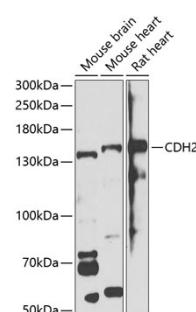
Immunofluorescence - CDH2 Polyclonal Antibody (A0432)

### Recommended Dilutions

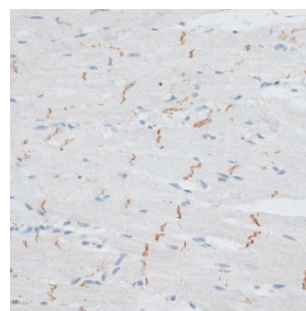
WB 1:500 -  
1:2000

IHC 1:50 -  
1:200

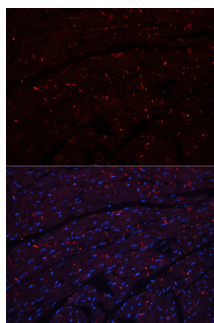
IF 1:50 -  
1:200



Western blot - CDH2 Polyclonal Antibody (A0432)



Immunohistochemistry - CDH2 Polyclonal Antibody (A0432)



Immunofluorescence - CDH2 Polyclonal Antibody (A0432)