

WTAP Polyclonal Antibody

Catalog No.	A14695	Category	Polyclonal Antibodies
Applications	WB	Observed MW	44kDa
Cross-reactivity	Human, Mouse, Rat	Calculated MW	17kDa/44kDa

Immunogen Information

Immunogen	Recombinant fusion protein containing a sequence corresponding to amino acids 1-396 of human WTAP (NP_004897.2).
Gene ID	9589
Swiss prot	Q15007
Synonyms	WTAP; Mum2; WT1 associated protein

Product information

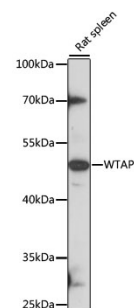
Source	Rabbit
Isotype	IgG
Purification method	Affinity purification
Storage	Store at -20°C. Avoid freeze / thaw cycles. Buffer: PBS with 0.02% sodium azide, 50% glycerol, pH7.3.

Background

The Wilms tumor suppressor gene WT1 appears to play a role in both transcriptional and posttranscriptional regulation of certain cellular genes. This gene encodes a WT1-associating protein, which is a ubiquitously expressed nuclear protein. Like WT1 protein, this protein is localized throughout the nucleoplasm as well as in speckles and partially colocalizes with splicing factors. Alternative splicing of this gene results in several transcript variants encoding three different isoforms.

Recommended Dilutions

WB 1:500 -
1:2000



Western blot - WTAP Polyclonal Antibody (A14695)