

PD-L1 /CD274, Human Recombinant

CATALOG NO: P1023-10 10 µg
P1023-50 50 µg

ALTERNATIVE NAMES: PD-L1, CD274, B7-H1, PDCD1L1, PDCD1LG1

SOURCE: *E. coli*

FORM: Lyophilized

FORMULATION: Lyophilized from 0.22 µm filtered solution in PBS

PURITY: ≥80% by SDS-PAGE and SEC analyses

MOL. WT.: 28.3 kDa (19-238 aa + N-terminal Poly-his tag)

STORAGE CONDITIONS AND RECONSTITUTION: Store at -20°C. Stable for at least 6 months as supplied. Reconstitute to 0.2-1 mg/ml in PBS, store at -80°C in aliquots and use within 6 months after reconstitution. Avoid repeated freeze-thaw cycles.

BACKGROUND: Programmed death 1 ligand 1 (PD-L1) also known as cluster of differentiation (CD274) or B7 homolog 1 (B7-H1), is a member of the growing B7 family of immune molecules and is involved in the regulation of cellular and humoral immune responses. B7-H1 is a cell surface immunoglobulin superfamily with two Ig-like domains within the extracellular region and a short cytoplasmic domain. PD-L1 is highly expressed in the heart, skeletal muscle, placenta and lung and weakly expressed in the thymus, spleen, kidney and liver. PD-L1 is expressed on activated T-cells, B-cells, dendritic cells, keratinocytes and monocytes. PD-L1 is up-regulated on T- and B-cells, dendritic cells, keratinocytes and monocytes after LPS and IFNG activation and up-regulated in B-cells activated by surface Ig cross-linking. PD-L1 is involved in the costimulatory signal, essential for T-cell proliferation and production of IL10 and IFNG, in an IL2-dependent and a PDCD1-independent manner.

APPLICATIONS: Human Recombinant PD-L1 can be used in the activity or inhibitor screening, substrate profiling, western blotting, ELISA, and other functional assays.

SPECIFIC ACTIVITY: BioVision's Human Recombinant PD-L1 has been tested for its ability to bind Human PD-1 in a functional ELISA with a linear range of 0.125-1 µg/ml.

For Research Use Only! Not to be used in humans.

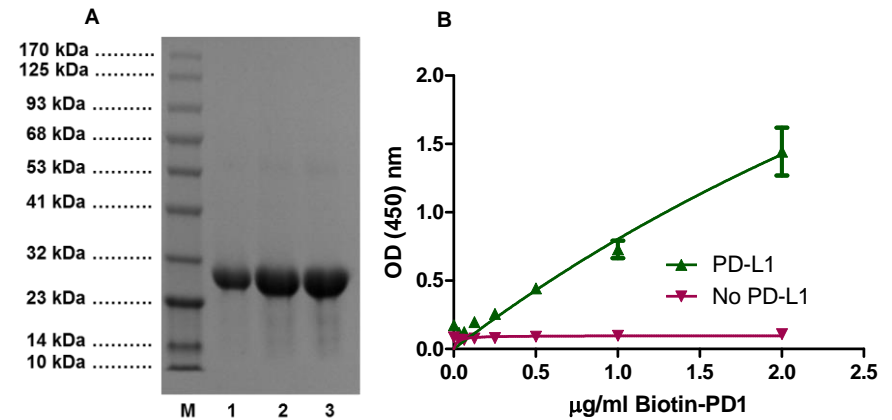


Fig. 1A: SDS-PAGE (4-20%) of Human Recombinant PD-L1:
M: Protein Marker
1: Human PD-L1 (10 µg)
2: Human PD-L1 (20 µg)
3: Human PD-L1 (30 µg)

Fig. 1B: Human Recombinant PD-L1 when immobilized at 2 µg/ml in a functional ELISA is able to bind biotinylated Human Recombinant PD-1 (n = 3)

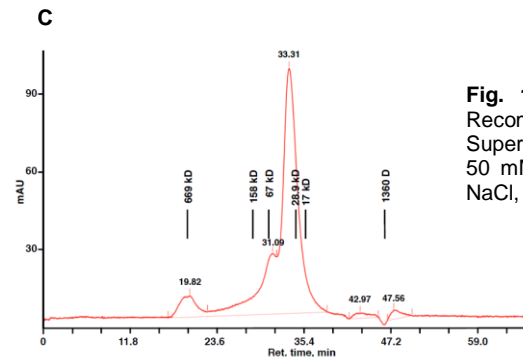


Fig. 1C: SEC analysis of Human Recombinant PD-L1 using a Superose 6 column at 0.4 ml/min in 50 mM sodium phosphate, 300 mM NaCl, pH 7.5

RELATED PRODUCTS:

- PD-L1/CD274 (Human) ELISA Kit (Cat. No. K4155-100)
- PD-1/PD-L1 Inhibitor 2 (Cat. No. B1050-5,-25)
- Human CellExp™ PD-L1 /CD274 /B7-H1, human recombinant (Cat. No. 7429-10, -50)
- Human CellExp™ PD-L1 /CD274 /B7-H1, mouse recombinant (Cat. No. 7428-10,-50)
- Human CellExp™ PD-1 /PDCD1, human recombinant (Cat. No. 7498-10,-50,-1000)