

## UBE2I Polyclonal Antibody

<b>Catalog No.</b>	A13558	<b>Category</b>	Polyclonal Antibodies
<b>Applications</b>	WB, IF	<b>Observed MW</b>	Refer to figures
<b>Cross-reactivity</b>	Human	<b>Calculated MW</b>	18kDa

### Immunogen Information

<b>Immunogen</b>	Recombinant fusion protein containing a sequence corresponding to amino acids 1-158 of human UBE2I (NP_003336.1).
<b>Gene ID</b>	7329
<b>Swiss prot</b>	P63279
<b>Synonyms</b>	UBE2I; C358B7.1; P18; UBC9; SUMO-conjugating enzyme UBC9

### Product information

<b>Source</b>	Rabbit
<b>Isotype</b>	IgG
<b>Purification method</b>	Affinity purification
<b>Storage</b>	Store at -20°C. Avoid freeze / thaw cycles. Buffer: PBS with 0.02% sodium azide, 50% glycerol, pH7.3.

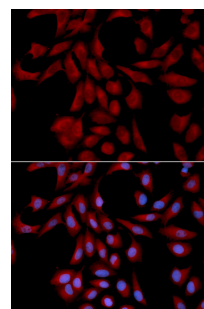
### Background

The modification of proteins with ubiquitin is an important cellular mechanism for targeting abnormal or short-lived proteins for degradation. Ubiquitination involves at least three classes of enzymes: ubiquitin-activating enzymes, or E1s, ubiquitin-conjugating enzymes, or E2s, and ubiquitin-protein ligases, or E3s. This gene encodes a member of the E2 ubiquitin-conjugating enzyme family. Four alternatively spliced transcript variants encoding the same protein have been found for this gene.

### Recommended Dilutions

WB 1:500 -  
1:2000

IF 1:50 -  
1:200



Immunofluorescence - UBE2I Polyclonal Antibody (A13558)