

PGC Polyclonal Antibody

Catalog No.	A2788	Category	Polyclonal Antibodies
Applications	WB	Observed MW	45-50kDa
Cross-reactivity	Mouse, Rat	Calculated MW	34kDa/42kDa

Immunogen Information

Immunogen	A synthetic peptide corresponding to a sequence within amino acids 100-200 of human PGC (NP_001159896.1).
Gene ID	5225
Swiss prot	P20142
Synonyms	PGC; PEPC; PGII; gastricsin

Product information

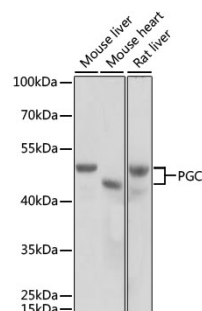
Source	Rabbit
Isotype	IgG
Purification method	Affinity purification
Storage	Store at -20°C. Avoid freeze / thaw cycles. Buffer: PBS with 0.02% sodium azide, 50% glycerol, pH7.3.

Background

This gene encodes an aspartic proteinase that belongs to the peptidase family A1. The encoded protein is a digestive enzyme that is produced in the stomach and constitutes a major component of the gastric mucosa. This protein is also secreted into the serum. This protein is synthesized as an inactive zymogen that includes a highly basic prosegment. This enzyme is converted into its active mature form at low pH by sequential cleavage of the prosegment that is carried out by the enzyme itself. Polymorphisms in this gene are associated with susceptibility to gastric cancers. Serum levels of this enzyme are used as a biomarker for certain gastric diseases including *Helicobacter pylori* related gastritis. Alternate splicing results in multiple transcript variants. A pseudogene of this gene is found on chromosome 1.

Recommended Dilutions

WB 1:500 -
1:2000



Western blot - PGC Polyclonal Antibody (A2788)