

LYZ Monoclonal Antibody

Catalog No.	A10972	Category	Monoclonal Antibodies
Applications	WB, IHC, IF, IP	Observed MW	14kDa
Cross-reactivity	Human, Mouse, Rat	Calculated MW	16kDa

Immunogen Information

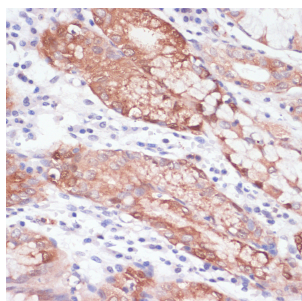
Immunogen	Recombinant protein of human LYZ
Gene ID	4069
Swiss prot	P61626
Synonyms	LYZ; LYZF1; LZM; lysozyme

Product information

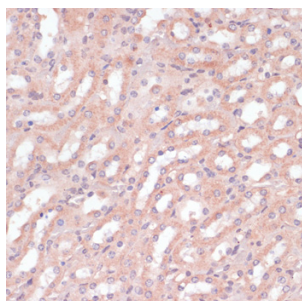
Source	Rabbit
Isotype	IgG
Purification method	Affinity purification
Storage	Store at -20°C. Avoid freeze / thaw cycles. Buffer: PBS with 0.02% sodium azide, 50% glycerol, pH7.3.

Background

This gene encodes human lysozyme, whose natural substrate is the bacterial cell wall peptidoglycan (cleaving the beta[1-4]glycosidic linkages between N-acetylmuramic acid and N-acetylglucosamine). Lysozyme is one of the antimicrobial agents found in human milk, and is also present in spleen, lung, kidney, white blood cells, plasma, saliva, and tears. The protein has antibacterial activity against a number of bacterial species. Missense mutations in this gene have been identified in heritable renal amyloidosis.



Immunohistochemistry - LYZ Monoclonal Antibody (A10972)



Immunohistochemistry - LYZ Monoclonal Antibody (A10972)

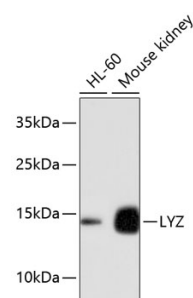
Recommended Dilutions

WB 1:5000 -
1:10000

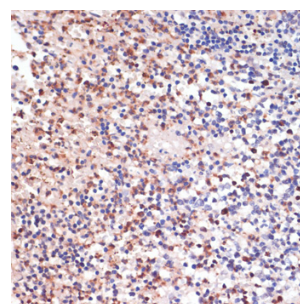
IHC 1:50 -
1:200

IF 1:50 - 1:200

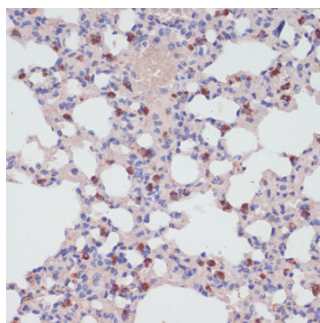
IP 1:20 - 1:50



Western blot - LYZ Monoclonal Antibody (A10972)



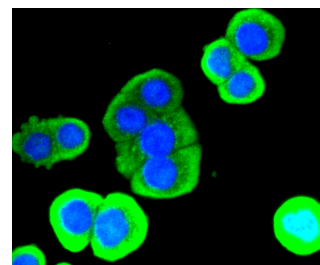
Immunohistochemistry - LYZ Monoclonal Antibody (A10972)



Immunohistochemistry - LYZ Monoclonal Antibody (A10972)



Immunohistochemistry - LYZ Monoclonal Antibody (A10972)



Immunofluorescence - LYZ Monoclonal Antibody (A10972)