

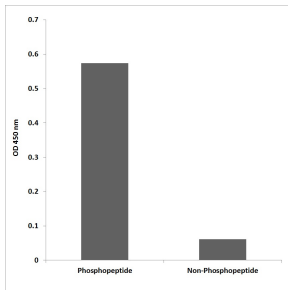
## Anti-MAPKAPK-2 (phospho Thr222) Antibody (A93465)

### Specifications:

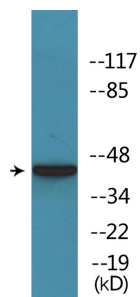
Name:	Anti-MAPKAPK-2 (phospho Thr222) Antibody
Description:	Rabbit polyclonal antibody to MAPKAPK-2 (phospho Thr222).
Specificity:	This antibody detects endogenous levels of MAPKAPK2 only when phosphorylated at Thr222.
Applications:	WB, IHC, ELISA
Recommended Dilutions:	WB: 1:500-1:1000, IHC: 1:50-1:100, ELISA: 1:1000
Reactivity:	Human, Mouse, Rat
Immunogen:	Synthetic phospho-peptide derived from human MAPKAPK-2 around the phosphorylation site of Thr222.
Host:	Rabbit
Clonality:	Polyclonal
Isotype:	IgG
Conjugate:	Unconjugated
Purification:	Purified from rabbit serum by antigen affinity chromatography using the immunizing phospho peptide.
Molecular Weight:	45kDa
Product Form:	Liquid
Formulation:	Supplied in Phosphate Buffered Saline (without Mg <sup>2+</sup> and Ca <sup>2+</sup> ), pH 7.4, with 150mM NaCl, 0.02% Sodium Azide, and 50% Glycerol.
Storage:	Shipped at 4°C. Upon delivery aliquot and store at -20°C. Avoid freeze / thaw cycles.
Disclaimer:	This product is for research use only. It is not intended for diagnostic or therapeutic use.

## Anti-MAPKAPK-2 (phospho Thr222) Antibody (A93465)

### Images:



ELISA for immunogen phosphopeptide (left) and non-phosphopeptide (right) using Anti-MAPKAPK-2 (phospho Thr222) Antibody.



Western blot analysis of lysates from COS7 cells treated with UV 15' using Anti-MAPKAPK-2 (phospho Thr222) Antibody.