

BRINP1 Polyclonal Antibody

Catalog No.	A11723	Category	Polyclonal Antibodies
Applications	WB	Observed MW	105kDa
Cross-reactivity	Human	Calculated MW	37kDa/55kDa/88kDa

Immunogen Information

Immunogen	Recombinant fusion protein containing a sequence corresponding to amino acids 20-300 of human BRINP1 (NP_055433.2).
Gene ID	1620
Swiss prot	O60477
Synonyms	BRINP1; DBC1; DBCCR1; FAM5A; BMP/retinoic acid inducible neural specific 1

Product information

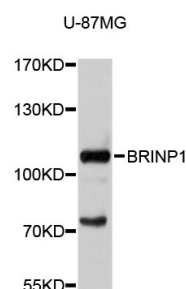
Source	Rabbit
Isotype	IgG
Purification method	Affinity purification
Storage	Store at -20°C. Avoid freeze / thaw cycles. Buffer: PBS with 0.02% sodium azide, 50% glycerol, pH7.3.

Background

This gene is located within a chromosomal region that shows loss of heterozygosity in some bladder cancers. It contains a 5' CpG island that may be a frequent target of hypermethylation, and it may undergo hypermethylation-based silencing in some bladder cancers.

Recommended Dilutions

WB 1:500 -
1:2000



Western blot - BRINP1 Polyclonal Antibody (A11723)