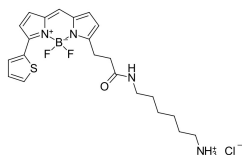


## BDP 558/568 amine (A270058)

### Specifications:

|                         |   |
|-------------------------|---|
| Name:                   | BDP 558/568 amine   |
| Description:            | Primary amine is a versatile functional group for bioconjugation. It is reactive against activated carboxylic acid derivatives like pentafluorophenyl esters and acyl halogenides, other electrophiles like epoxides, Michael acceptors like acrylates. It can aminate carbonyl compounds like aldehydes and ketones in reductive conditions. BDP 558/568 is a universal borondipyrromethene dye with the emission in orange/yellow part of the spectrum. |
| Absorption Maxima:      | 561 nm  |
| Extinction Coefficient: | 84400 M <sup>-1</sup> cm <sup>-1</sup>  |
| Emission Maxima:        | 569 nm  |
| CF <sub>260</sub> :     | 0.00  |
| CF <sub>280</sub> :     | 0.07  |
| Purity:                 | 95% (by <sup>1</sup> H NMR and HPLC-MS).  |
| Molecular Formula:      | C <sub>22</sub> H <sub>28</sub> N <sub>4</sub> BClF <sub>2</sub> OS   |
| Molecular Weight:       | 480.81 kDa  |
| Product Form:           | Dark colored powder.  |
| Solubility:             | Good in DMF and DMSO.   |
| Storage:                | Shipped at room temperature. Upon delivery, store in the dark at -20°C. Avoid prolonged exposure to light. Desiccate.   |
| Disclaimer:             | This product is for research use only. It is not intended for diagnostic or therapeutic use.  |

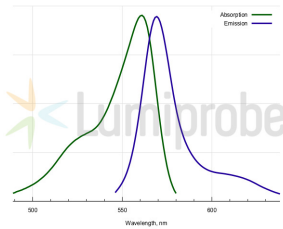
### Images:



Structure of BDP 558/568 amine.

## BDP 558/568 amine (A270058)

Images continued:



Absorption and emission spectra of BDP 558/568.