

## MED21 Polyclonal Antibody

<b>Catalog No.</b>	A12168	<b>Category</b>	Polyclonal Antibodies
<b>Applications</b>	WB, IF	<b>Observed MW</b>	16kDa
<b>Cross-reactivity</b>	Human, Mouse, Rat	<b>Calculated MW</b>	15kDa

### Immunogen Information

<b>Immunogen</b>	Recombinant fusion protein containing a sequence corresponding to amino acids 1-144 of human MED21 (NP_004255.2).
<b>Gene ID</b>	9412
<b>Swiss prot</b>	Q13503
<b>Synonyms</b>	MED21; SRB7; SURB7; hSrb7; mediator complex subunit 21

### Product information

<b>Source</b>	Rabbit
<b>Isotype</b>	IgG
<b>Purification method</b>	Affinity purification
<b>Storage</b>	Store at -20°C. Avoid freeze / thaw cycles. Buffer: PBS with 0.02% sodium azide, 50% glycerol, pH7.3.

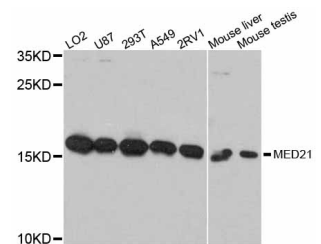
### Background

This gene encodes a member of the mediator complex subunit 21 family. The encoded protein interacts with the human RNA polymerase II holoenzyme and is involved in transcriptional regulation of RNA polymerase II transcribed genes. A pseudogene of this gene is located on chromosome 8. Alternative splicing results in multiple transcript variants.

### Recommended Dilutions

WB 1:500 -  
1:2000

IF 1:50 -  
1:200



Western blot - MED21 Polyclonal Antibody (A12168)