

## CBX8 Polyclonal Antibody

<b>Catalog No.</b>	A2682	<b>Category</b>	Polyclonal Antibodies
<b>Applications</b>	WB, IHC	<b>Observed MW</b>	43kDa
<b>Cross-reactivity</b>	Human, Mouse, Rat	<b>Calculated MW</b>	43kDa

### Immunogen Information

<b>Immunogen</b>	Recombinant protein of human CBX8
<b>Gene ID</b>	57332
<b>Swiss prot</b>	Q9HC52
<b>Synonyms</b>	CBX8; PC3; RC1; chromobox 8

### Product information

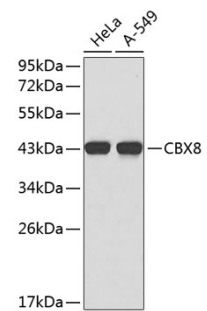
<b>Source</b>	Rabbit
<b>Isotype</b>	IgG
<b>Purification method</b>	Affinity purification
<b>Storage</b>	Store at -20°C. Avoid freeze / thaw cycles. Buffer: PBS with 0.02% sodium azide, 50% glycerol, pH7.3.

### Background

### Recommended Dilutions

WB 1:500 -  
1:2000

IHC 1:50 -  
1:200



Western blot - CBX8 Polyclonal Antibody (A2682)