

## NR2E1 Polyclonal Antibody

<b>Catalog No.</b>	A13361	<b>Category</b>	Polyclonal Antibodies
<b>Applications</b>	WB, IF	<b>Observed MW</b>	43kDa
<b>Cross-reactivity</b>	Human	<b>Calculated MW</b>	42kDa/46kDa

### Immunogen Information

<b>Immunogen</b>	Recombinant fusion protein containing a sequence corresponding to amino acids 106-385 of human NR2E1 (NP_003260.1).
<b>Gene ID</b>	7101
<b>Swiss prot</b>	Q9Y466
<b>Synonyms</b>	NR2E1; TLL; TLX; XTLL; nuclear receptor subfamily 2 group E member 1

### Product information

<b>Source</b>	Rabbit
<b>Isotype</b>	IgG
<b>Purification method</b>	Affinity purification
<b>Storage</b>	Store at -20°C. Avoid freeze / thaw cycles. Buffer: PBS with 0.02% sodium azide, 50% glycerol, pH7.3.

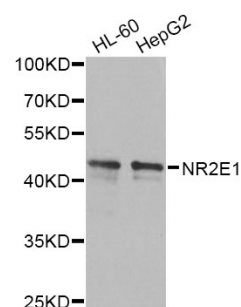
### Background

The protein encoded by this gene is an orphan receptor involved in retinal development. The encoded protein also regulates adult neural stem cell proliferation and may be involved in control of aggressive behavior. Two transcript variants encoding different isoforms have been found for this gene.

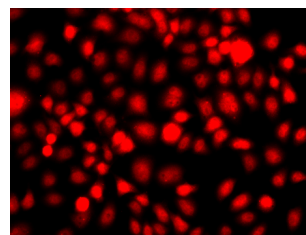
### Recommended Dilutions

WB 1:500 -  
1:2000

IF 1:50 -  
1:200



Western blot - NR2E1 Polyclonal Antibody (A13361)



Immunofluorescence - NR2E1 Polyclonal Antibody (A13361)