

## CTBP2 Polyclonal Antibody

<b>Catalog No.</b>	A16826	<b>Category</b>	Polyclonal Antibodies
<b>Applications</b>	WB, IF	<b>Observed MW</b>	49kDa
<b>Cross-reactivity</b>	Human, Mouse, Rat	<b>Calculated MW</b>	48kDa/56kDa/106kDa

### Immunogen Information

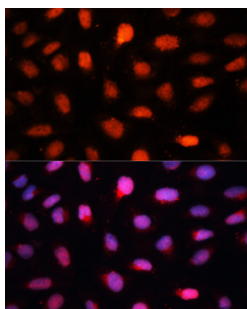
<b>Immunogen</b>	A synthetic peptide of human CTBP2.
<b>Gene ID</b>	1488
<b>Swiss prot</b>	P56545
<b>Synonyms</b>	CTBP2; C-terminal-binding protein 2

### Product information

<b>Source</b>	Rabbit
<b>Isotype</b>	IgG
<b>Purification method</b>	Affinity purification
<b>Storage</b>	Store at -20°C. Avoid freeze / thaw cycles. Buffer: PBS with 0.02% sodium azide, 50% glycerol, pH7.3.

### Background

This gene produces alternative transcripts encoding two distinct proteins. One protein is a transcriptional repressor, while the other isoform is a major component of specialized synapses known as synaptic ribbons. Both proteins contain a NAD<sup>+</sup> binding domain similar to NAD<sup>+</sup>-dependent 2-hydroxyacid dehydrogenases. A portion of the 3' untranslated region was used to map this gene to chromosome 21q21.3; however, it was noted that similar loci elsewhere in the genome are likely. Blast analysis shows that this gene is present on chromosome 10. Several transcript variants encoding two different isoforms have been found for this gene.

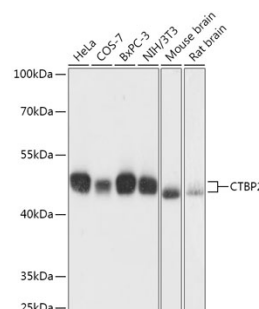


Immunofluorescence - CTBP2 Polyclonal Antibody (A16826)

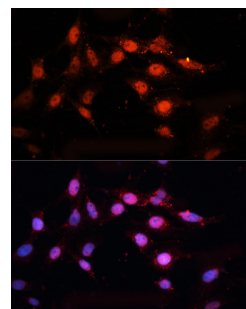
### Recommended Dilutions

WB 1:500 -  
1:2000

IF 1:50 -  
1:200



Western blot - CTBP2 Polyclonal Antibody (A16826)



Immunofluorescence - CTBP2 Polyclonal Antibody (A16826)