

DRD5 Polyclonal Antibody

Catalog No.	A3170	Category	Polyclonal Antibodies
Applications	WB	Observed MW	53kDa
Cross-reactivity	Human, Rat	Calculated MW	52kDa

Immunogen Information

Immunogen	Recombinant fusion protein containing a sequence corresponding to amino acids 361-477 of human DRD5 (NP_000789.1).
Gene ID	1816
Swiss prot	P21918
Synonyms	DRD5; DBDR; DRD1B; DRD1L2; dopamine receptor D5

Product information

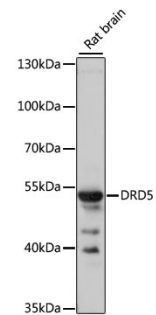
Source	Rabbit
Isotype	IgG
Purification method	Affinity purification
Storage	Store at -20°C. Avoid freeze / thaw cycles. Buffer: PBS with 0.02% sodium azide, 50% glycerol, pH7.3.

Background

This gene encodes the D5 subtype of the dopamine receptor. The D5 subtype is a G-protein coupled receptor which stimulates adenylyl cyclase. This receptor is expressed in neurons in the limbic regions of the brain. It has a 10-fold higher affinity for dopamine than the D1 subtype. Pseudogenes related to this gene reside on chromosomes 1 and 2.

Recommended Dilutions

WB 1:500 -
1:2000



Western blot - DRD5 Polyclonal Antibody (A3170)