

EPO Polyclonal Antibody

Catalog No.	A12435	Category	Polyclonal Antibodies
Applications	WB	Observed MW	38kDa
Cross-reactivity	Human	Calculated MW	21kDa

Immunogen Information

Immunogen	A synthetic peptide corresponding to a sequence within amino acids 100 to the C-terminus of human EPO (NP_000790.2).
Gene ID	2056
Swiss prot	P01588
Synonyms	EPO; EP; MVCD2; erythropoietin

Product information

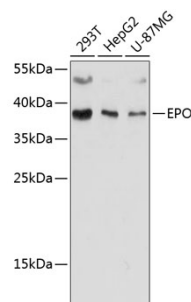
Source	Rabbit
Isotype	IgG
Purification method	Affinity purification
Storage	Store at -20°C. Avoid freeze / thaw cycles. Buffer: PBS with 0.02% sodium azide, 50% glycerol, pH7.3.

Background

This gene is a member of the EPO/TPO family and encodes a secreted, glycosylated cytokine composed of four alpha helical bundles. The protein is found in the plasma and regulates red cell production by promoting erythroid differentiation and initiating hemoglobin synthesis. This protein also has neuroprotective activity against a variety of potential brain injuries and antiapoptotic functions in several tissue types.

Recommended Dilutions

WB 1:500 -
1:2000



Western blot - EPO Polyclonal Antibody (A12435)