

LMO2 Polyclonal Antibody

Catalog No.	A12679	Category	Polyclonal Antibodies
Applications	WB	Observed MW	20kDa
Cross-reactivity	Mouse	Calculated MW	5kDa/18kDa/25kDa

Immunogen Information

Immunogen	Recombinant fusion protein containing a sequence corresponding to amino acids 1-158 of human LMO2 (NP_001135788.1).
Gene ID	4005
Swiss prot	P25791
Synonyms	LMO2; RBTN2; RBTNL1; RHOM2; TTG2; rhombotin-2

Product information

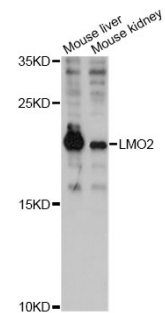
Source	Rabbit
Isotype	IgG
Purification method	Affinity purification
Storage	Store at -20°C. Avoid freeze / thaw cycles. Buffer: PBS with 0.02% sodium azide, 50% glycerol, pH7.3.

Background

LMO2 encodes a cysteine-rich, two LIM-domain protein that is required for yolk sac erythropoiesis. The LMO2 protein has a central and crucial role in hematopoietic development and is highly conserved. The LMO2 transcription start site is located approximately 25 kb downstream from the 11p13 T-cell translocation cluster (11p13 ttc), where a number T-cell acute lymphoblastic leukemia-specific translocations occur. Alternative splicing results in multiple transcript variants encoding different isoforms.

Recommended Dilutions

WB 1:500 -
1:2000



Western blot - LMO2 Polyclonal Antibody (A12679)