

MESDC2 Polyclonal Antibody

Catalog No.	A13931	Category	Polyclonal Antibodies
Applications	WB	Observed MW	26kDa
Cross-reactivity	Human, Mouse	Calculated MW	26kDa

Immunogen Information

Immunogen	Recombinant fusion protein containing a sequence corresponding to amino acids 1-234 of human MESDC2 (NP_055969.1).
Gene ID	23184
Swiss prot	Q14696
Synonyms	MESDC2; BOCA; MESD; LDLR chaperone MESD

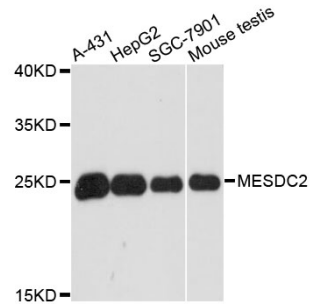
Product information

Source	Rabbit
Isotype	IgG
Purification method	Affinity purification
Storage	Store at -20°C. Avoid freeze / thaw cycles. Buffer: PBS with 0.02% sodium azide, 50% glycerol, pH7.3.

Background

Recommended Dilutions

WB 1:500 -
1:2000



Western blot - MESDC2 Polyclonal Antibody (A13931)