

# Quick-DNA/RNA™ Miniprep Plus Kit

DNA & RNA from any sample

## Highlights

- Spin-column purification of DNA and total RNA (including small/microRNAs) from any sample including cells, solid tissue, biological liquids, environmental samples, swabs, and any sample in DNA/RNA Shield™
- DNA/RNA Shield™ and Proteinase K are included for unique preservation and lysis technology.
- DNA & RNA are eluted in two separate fractions and are ready for Next-Gen Sequencing, RT/qPCR, etc. *DNase I is included.*

Catalog Numbers:  
D7003T, D7003



Scan with your smart-phone camera to  
view the online protocol/video.



# Table of Contents

---

<b>Product Contents</b> .....	<b>01</b>
<b>Specifications</b> .....	<b>02</b>
<b>Product Description</b> .....	<b>03</b>
<b>Input Capacity &amp; Average Yield Chart</b> .....	<b>04</b>
<b>Protocol</b> .....	<b>05</b>
(I) Buffer Preparation .....	<b>05</b>
(II) Sample Preparation .....	<b>06</b>
DNA/RNA Shield Samples, Cells, Tissue	<b>06</b>
Tough-to-Lyse Samples, FFPE Tissue, Blood Cells	<b>07</b>
Whole Blood, Saliva, Buccal Cells	<b>08</b>
Urine	<b>09</b>
(III) DNA and RNA Purification .....	<b>10</b>
<b>Appendices</b> .....	<b>11</b>
Sample Stabilization and Storage in DNA/RNA Shield	<b>11</b>
Samples in RNAprotect, RNAlater, PAXgene, UTM, etc.	<b>11</b>
Liquids/Reaction Clean-up	<b>11</b>
DNase I Treatment	<b>12</b>
Protein Purification	<b>12</b>
Homogenization with ZR BashingBead Lysis Tubes	<b>12</b>
<b>Ordering Information</b> .....	<b>13</b>
<b>Complete Your Workflow</b> .....	<b>14</b>
<b>Troubleshooting Guide</b> .....	<b>15</b>
<b>Notes</b> .....	<b>16</b>
<b>Guarantee</b> .....	<b>17</b>

# Product Contents

<b>Quick-DNA/RNA™ Miniprep Plus Kit</b>	<b>D7003T</b> (10 prep)	<b>D7003</b> (50 prep)
DNA/RNA Lysis Buffer	10 ml	50 ml
DNA/RNA Prep Buffer	5 ml (x2)	50 ml
DNA/RNA Wash Buffer <sup>1</sup>	16 ml (x2) (ready-to-use)	24 ml (x2) (concentrate)
DNase/RNase-Free Water	1 ml (x2)	10 ml
DNase I <sup>2</sup> (lyophilized)	50 U	250 U
DNA Digestion Buffer	0.8 ml	4 ml
DNA/RNA Shield™ (2X concentrate)	5 ml	25 ml
PK Digestion Buffer	1 ml	5 ml
Proteinase K <sup>3</sup> (lyophilized) & Storage Buffer	5 mg (x2)	60 mg
Spin-Away™ Filters	10	50
Zymo-Spin™ IIICG Columns	10	50
Collection Tubes	30	150
Instruction Manual	1 pc	1 pc

**Storage Temperature** - Store all kit components (i.e., buffers, columns) at room temperature.

Before use:

1 Add 96 ml 100% ethanol (104 ml 95% ethanol) to the 24 ml **DNA/RNA Wash Buffer** concentrate (D7003).

**DNA/RNA Wash Buffer** (D7003T) is supplied ready-to-use and does not require the addition of ethanol.

2 Reconstitute lyophilized **DNase I** with **DNase/RNase-Free Water**, mix by gentle inversion and store frozen aliquots:

**#E1009-A (250 U)**, add 275 µl **water**

**#E1009-A-S (50 U)**, add 55 µl **water**

3 Add **Proteinase K Storage Buffer** to the lyophilized **Proteinase K**, see Buffer Preparation, page 5. Store frozen aliquots.

# Specifications

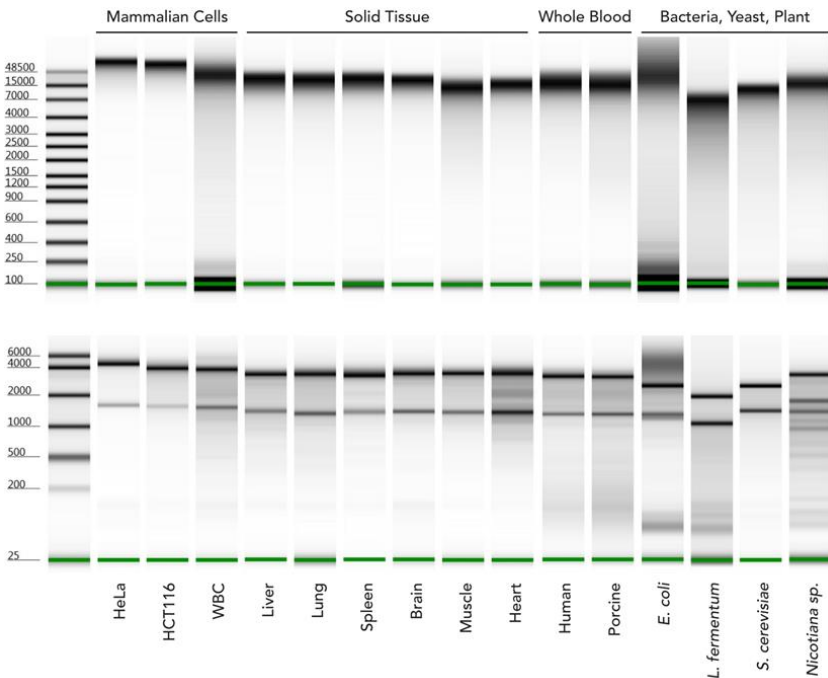
- **Sample Sources** – Any cells (animal, bacterial, blood cells, etc.), all tissues (tough-to-lyse, FFPE, etc.), blood, biological fluids, enzymatic reactions (e.g., DNase I treated) and samples in **DNA/RNA Shield™** or other preservation reagents.
- **Sample Preservation and Inactivation** – **DNA/RNA Shield™** lyses cells, inactivates nucleases and infectious agents (e.g., virus, pathogens) and is ideal for safe sample storage and transport at ambient temperatures (page 11).
- **Size** – Genomic DNA ( $\geq 40$  kb), mitochondrial and viral DNA (if present) and total RNA including small/microRNAs ( $\geq 17$  nt).
- **Purity** –  $A_{260}/A_{280}$  &  $A_{260}/A_{230} > 1.8$ . DNA & RNA is ready for Next-Gen Sequencing, RT/qPCR, etc.
- **Binding Capacity** – **Spin-Away Filter (yellow)** and **Zymo-Spin™ IIICG Column (green)** yield up to 100 µg DNA and RNA, respectively.
- **Compatibility** – For samples stored in preservation reagents: **DNA/RNA Shield™**, RNAprotect®, Allprotect®, Universal transport medium/viral transport medium (UTM®/VTM®), PAXgene® and RNeasy®.
- **Elution Volume** –  $\geq 50$  µl **DNase/RNase-Free Water**.
- **Equipment Needed** (user provided) – Microcentrifuge, vortex, heat block, water bath or incubator.

# Product Description

The **Quick-DNA/RNA™ Miniprep Plus Kit** combines **Quick-DNA/RNA™** technology with the addition of **DNA/RNA Shield™**, a unique preservation and lysis technology, and **Proteinase K** to enable easy, reliable, and rapid isolation of RNA from any biological sample including any cells, all tissues, blood, and other biological fluids.

The procedure uses unique spin-column technology that results in high-quality DNA and total RNA (including small RNAs 17-200 nt) that are ready for Next-Gen Sequencing, RT/qPCR, hybridization, etc.

## High-Quality DNA & RNA From Any Sample Type



High quality genomic DNA (top) and total RNA (bottom) are isolated from various sample types including mammalian cells, solid tissue, whole blood, bacteria, yeast, and plant using the **Quick-DNA/RNA™ Plus** kits (Agilent 2200 TapeStation™).

## Input Capacity and gDNA/Total RNA Yield

Input	Average gDNA Yield	Average RNA Yield	Kit Capacity
<b>Cells</b>	4 µg (per 10 <sup>6</sup> cells)	10 µg (per 10 <sup>6</sup> cells)	Up to 10 <sup>7</sup>
HeLa	6 µg	15 µg	
<b>High Yield Tissue</b> <sup>1 (mouse)</sup>	≥ 30 µg (per 10 mg)	≥ 30 µg (per 10 mg)	Up to 20 mg
Spleen	50-70 µg	30-50 µg	
Liver	15-30 µg	40-60 µg	
<b>Low Yield Tissue</b> <sup>1 (mouse)</sup>	≤ 30 µg (per 10 mg)	≤ 30 µg (per 10 mg)	Up to 50 mg
Brain, Heart	5-15 µg	5-15 µg	
Muscle	5-15 µg	5-20 µg	
Lung	15-30 µg	10-20 µg	
Intestine	15-30 µg	10-30 µg	
Kidney	15-30 µg	20-30 µg	
<b>Whole Blood</b> <sup>2</sup>	(per 1 ml)	(per 1 ml)	Up to 3 ml
Porcine	5-10 µg	10-20 µg	
Human	2-5 µg	2-10 µg	

<sup>1</sup> Yield from tissue can vary due to other factors (i.e., organism type, physiological state and growth conditions).

<sup>2</sup> Yield from blood can vary based upon collection, sample preparation, donor, age, and/or health conditions.

# Protocol

The protocol consists of: (I) Buffer Preparation, (II) Sample Preparation and (III) DNA & RNA Purification.

## (I) Buffer Preparation

- ✓ Add 96 ml 100% ethanol (104 ml 95% ethanol) to the 24 ml **DNA/RNA Wash Buffer concentrate** (D7003). **DNA/RNA Wash Buffer** (D7003T) is supplied ready-to-use and does not require the addition of ethanol.
- ✓ Reconstitute lyophilized **DNase I** with **DNase/RNase-Free Water** and mix by gentle inversion. Use immediately or store frozen aliquots:  
**#E1009-A (250 U)**, add 275 µl **water**  
**#E1009-A-S (50 U)**, add 55 µl **water**
- ✓ Reconstitute lyophilized **Proteinase K** at 20 mg/ml with **Proteinase K Storage Buffer** and mix by vortexing. Use immediately or store frozen aliquots.  
**#D3001-2-20 (60 mg)**, add 3.12 ml **buffer**  
**#D3001-2-5 (5 mg)**, add 0.26 ml **buffer**
- ✓ To prepare a 1X solution of **DNA/RNA Shield™**, add an equal volume of nuclease-free water (not provided) to the **DNA/RNA Shield™** (2X concentrate) (1:1) and mix well.

## (II) Sample Preparation

- ✓ Perform all steps at room temperature and centrifugation at 10,000-16,000 x g for 30 seconds, unless specified.

### Samples stabilized and stored in DNA/RNA Shield™ (cells, tissue, swab, etc.)

If frozen, thaw homogenized sample in **DNA/RNA Shield™** to room temperature (20-30°C). Mix well by vortex. Proceed to the appropriate procedure below based on sample type (omit the step involving the addition of DNA/RNA Shield™).

### Cells & Tissue (mammalian)

1. For samples (cells or tissue) already stored in **DNA/RNA Shield™**, add an equal volume of **DNA/RNA Lysis Buffer** (1:1), mix well and proceed to purification, page 10.
2. **Cells**: If in suspension<sup>1</sup>, pellet by centrifugation ( $\leq 500 \times g$  for 1 minute), remove supernatant and resuspend cell pellet in **DNA/RNA Lysis Buffer** (see table below). Proceed to purification, page 10.

Cells	Add DNA/RNA Lysis Buffer
$\leq 5 \times 10^6$	$\geq 300 \mu\text{l}$
$5 \times 10^6 - 10^7$	$\geq 600 \mu\text{l}$

3. **Tissue**<sup>2</sup>: Submerge an appropriate amount of fresh or frozen sample (see table below) into **DNA/RNA Shield™** (1X)<sup>3</sup> and homogenize<sup>4,5</sup>.

Tissue	Add DNA/RNA Shield (1X)
High-yield ( $\leq 25 \text{ mg}$ ) Low-yield ( $\leq 50 \text{ mg}$ )	$\leq 600 \mu\text{l}$

- a. For every 300  $\mu\text{l}$  of sample, add 15  $\mu\text{l}$  **Proteinase K** and 30  $\mu\text{l}$  **PK Digestion Buffer**. Mix and incubate at room temperature (20-30°C) for  $\geq 30$  minutes (homogenized) or 2-5 hours (non-homogenized). Optimization may be required.
- b. To remove particulate debris, centrifuge and transfer the cleared supernatant into a nuclease-free tube (not provided).
- c. Add an equal volume of **DNA/RNA Lysis Buffer** to the supernatant (1:1) and mix well. Proceed to purification, page 10.

1 If liquid/media cannot be removed, add  $\geq 3$  volumes **DNA/RNA Lysis Buffer** to 1 volume liquid sample (3:1) and mix well. Proceed to purification, page 10.

2 For examples of sample type input and average yield, see chart on page 4.

3 For a 1X solution of **DNA/RNA Shield™**, see Buffer Preparation, page 5.

4 For efficient homogenization, bead beat samples with ZR BashingBead Lysis Tubes (S6012, S6003), sold separately. See Appendices (page 11) for bead beating parameters. Other types of homogenization can include mortar/pestle, dounce, syringe or tissue grinder, etc.

5 Alternatively (if no homogenization), tissue samples can be Proteinase K treated only (proceed to step 3a).



## **Tough-to-Lyse Samples** (bacteria, yeast, insect, swab, soil<sup>1</sup>, stool<sup>1</sup>, plant<sup>1</sup>, seed<sup>1</sup>)

1. Add 800 µl of **DNA/RNA Shield™** (1X)<sup>2</sup> to an appropriate amount of sample (see table below) and homogenize<sup>3</sup> (e.g., bead beating).

Solid Tissue	Microbes	Add DNA/RNA Shield (1X)
Plant/Seed or Insect (≤ 200 mg)	Bacteria (≤ 10 <sup>9</sup> ) Yeast (≤ 10 <sup>8</sup> ) Swab, Stool/Soil (≤ 50 mg)	800 µl

2. After homogenization, remove particulate debris by centrifugation at max speed. Transfer the cleared supernatant into a nuclease-free tube (not provided).
3. Add **DNA/RNA Lysis Buffer** to the supernatant (1:1), mix well and proceed with purification, page 10.

## **FFPE Tissue**

1. Remove (trim) excess paraffin wax from ≤ 25 mg FFPE tissue and transfer into a nuclease-free tube (not provided).
2. Add 400 µl **Deparaffinization Solution**<sup>4</sup> to the sample. Incubate at 55°C, 1 minute. Vortex briefly. Remove **Deparaffinization Solution**.
3. Add 95 µl **DNase/RNase-Free Water**, 95 µl **2X Digestion Buffer**<sup>4</sup>, and 10 µl **Proteinase K**. Mix well.
4. Incubate at 55°C for 1 hour. Then incubate at 65°C for 15 minutes to de-crosslink the sample.
5. Centrifuge to remove insoluble debris and transfer 200 µl supernatant to a nuclease-free tube (not provided).
6. Add **DNA/RNA Lysis Buffer** to the supernatant (1:1) and mix well. Proceed to purification, page 10.

## **Blood Cells** (mammalian, PBMCs, WBCs, etc.)

1. For blood cells, buffy coat and pelleted PAXgene® or RNAlater™ samples, resuspend in **DNA/RNA Shield™** (1X)<sup>2</sup>.

Blood Cells	Add DNA/RNA Shield™ (1X)
≤ 5 ml blood (≤ 10 <sup>7</sup> cells)	300 µl

2. For every 300 µl of sample, add 15 µl **Proteinase K** and 30 µl **PK Digestion Buffer**.
3. Mix and incubate at room temperature (20-30°C) for ≥ 30 minutes. Optimization may be required. Continue to step 4, page 8.

1 For PCR inhibitor removal, use OneStep PCR Inhibitor Removal Kit (D6030).

2 For a 1X solution of **DNA/RNA Shield™**, see Buffer Preparation, page 5.

3 For efficient homogenization, bead beat samples with ZR BashingBead Lysis Tubes (S6012, S6003), sold separately. See Appendices (page 11) for bead beating parameters.

4 Deparaffinization Solution (D3067-1-20) and 2X Digestion Buffer (D3050-1-20) are sold separately.

- After incubation, vortex sample and centrifuge at max speed for 2 minutes to pellet debris. Transfer 300 µl of the cleared supernatant to a nuclease-free tube (not provided).
- Add **DNA/RNA Lysis Buffer** to the supernatant (1:1) and mix well. Proceed to purification, page 10.

### **Whole Blood<sup>1,2</sup> (mammalian)**

- Add 200 µl **DNA/RNA Shield™** (2X concentrate) directly to each 200 µl of fresh or frozen blood sample (1:1) and mix thoroughly<sup>3</sup>.
- For every 400 µl of reagent/blood mixture, add 8 µl **Proteinase K** and mix well. Incubate at room temperature (20-30°C) for 30 minutes.
- Add an equal volume of isopropanol (1:1) and mix well.
- Transfer sample into a **Spin-Away™ Filter (yellow)** in a **Collection Tube** and centrifuge. Reload columns for samples > 700 µl.
- Discard the flow-through and transfer the filter into a nuclease-free tube (not provided).
- Add 200 µl **DNA/RNA Lysis Buffer** directly to filter matrix, let sit for 5 minutes then centrifuge. Save the flow-through and the filter column.
- Proceed to purification, page 10, step 2.

### **Saliva & Buccal Cells**

- For saliva and buccal cell samples, add an equal volume of **DNA/RNA Shield™** (2X) (1:1).

Saliva & Buccal Cells	Add DNA/RNA Shield™ (2X)
200 µl (≤ 10 <sup>7</sup> cells)	200 µl

- For every 400 µl of reagent/sample mixture, add 20 µl **Proteinase K** and 40 µl **PK Digestion Buffer**.
- Mix and incubate at room temperature (20-30°C) for ≥ 30 minutes. Optimization may be required.
- After incubation, vortex sample and centrifuge at max speed for 2 minutes to pellet debris. Transfer 400 µl of the cleared supernatant to a nuclease-free tube (not provided).
- Add **DNA/RNA Lysis Buffer** to the supernatant (1:1) and mix well. Proceed to purification, page 10.

1 Compatible with commonly used anticoagulants (e.g., EDTA, citrate, heparin)

2 Up to 3 ml blood per prep can be processed (by reloading the column).

3 To retain protein in the whole blood sample, omit step 2 and continue to step 3.

## Urine<sup>1</sup>

1. Generate pellet from up to 40 ml urine by adding 70 µl **Urine Conditioning Buffer**<sup>2</sup> for every 1 ml of urine and mix by vortex. Centrifuge at 3,000 x g for 15 minutes. Discard the supernatant and keep the pellet. Add **DNA/RNA Shield**<sup>™</sup> (1X)<sup>3</sup> and mix by pipetting.

Pelleted cells from urine	Add <b>DNA/RNA Shield</b> <sup>™</sup> (1X)
≤ 40 ml urine	300 µl

2. For every 300 µl of sample, add 15 µl **Proteinase K**.
3. Mix and incubate at room temperature (20-30°C) for ≥ 30 minutes. Optimization may be required.
4. After incubation, vortex sample and centrifuge at max speed for 2 minutes to pellet debris. Transfer 300 µl of the cleared supernatant to a nuclease-free tube (not provided).
5. Add **DNA/RNA Lysis Buffer** to the supernatant (1:1) and mix well. Proceed to purification, page 10.

---

1 Warm up urine sample at 37°C for 5-10 minutes if there is visual precipitation or cloudiness. Samples that contain bacterial contamination will not be clear.

2 Urine Conditioning Buffer (D3061-1-8, D30601-1-140) is sold separately.

3 For a 1X solution of **DNA/RNA Shield**<sup>™</sup>, see Buffer Preparation, page 5.

### (III) DNA and RNA Purification (in two separate fractions)

- ✓ Perform all steps at room temperature and centrifuge at 10,000-16,000 x g for 30 seconds, unless specified.

1. Transfer the sample into a **Spin-Away™ Filter<sup>1</sup> (yellow)** in a **Collection Tube** and centrifuge. Save the flow-through for RNA purification and the filter for DNA purification!

#### 2 DNA Purification

(DNA is in the filter.)

- a. Transfer the **Spin-Away Filter<sup>1</sup> (yellow)** into a new **Collection Tube**.

#### RNA Purification

(RNA is in the flow-through.)

- b. Add 1 volume ethanol (95-100%) to the flow-through and mix well.

Example: Add 300 µl ethanol to 300 µl flow-through.

Then transfer the mixture into a **Zymo-Spin™ IIICG Column<sup>1</sup> (green)** in a **Collection Tube** and centrifuge<sup>2</sup>. Discard the flow-through.

At this point, **DNase I** treatment (in-column) can be performed (see page 12).

3. Add 400 µl **DNA/RNA Prep Buffer** to the column and centrifuge. Discard the flow-through.
4. Add 700 µl **DNA/RNA Wash Buffer** to the column and centrifuge. Discard the flow-through.
5. Add 400 µl **DNA/RNA Wash Buffer** and centrifuge the column for 2 minutes to ensure complete removal of the wash buffer. Then carefully, transfer the column into a nuclease-free tube (not provided).
6. Add 100 µl **DNase/RNase-Free Water** directly to the column matrix and centrifuge.

Alternatively, for highly concentrated DNA/RNA use ≥ 50 µl elution.

The eluted DNA/RNA<sup>3</sup> can be used immediately or stored frozen.

1 To process samples > 700 µl, columns may be reloaded.

2 Optional: At this point, proteins can be purified from the flow-through (page 12).

3 For complete removal of PCR (RT) inhibitors from plant, soil, and fecal samples, use the OneStep™ PCR Inhibitor Removal Kit (D6030).

# Appendices

## Sample stabilization and storage in DNA/RNA Shield™

Liquid samples (e.g., whole blood): Add 3 volumes **DNA/RNA Shield™** (1X)<sup>1</sup> to 1 volume sample (3:1). Mix well.

Solid samples (e.g., tissue): Submerge sample ( $\leq 10\%$  (v/v or w/v)) in **DNA/RNA Shield™** (1X)<sup>1</sup> and homogenize (see Appendices, page 12).

Store samples in **DNA/RNA Shield™** at ambient temperature for  $\geq 1$  month or long term at frozen temperature. DNA/RNA Shield™ is directly compatible with most guanidinium-based extraction methods (e.g., no need to remove reagent from the stored sample prior to extraction).

## Samples in RNeasy Protect, Allprotect, RNeasy Lysis Buffer, PAXgene, UTM/VTM, saline or PBS

✓ RNeasy Protect®, Allprotect®: Add 3 volumes of **DNA/RNA Lysis Buffer** to 1 volume of liquid sample (3:1). Mix well and/or homogenize based on sample type (see Sample Preparation, page 6), then proceed to Purification, page 10.

✓ RNeasy Lysis Buffer™:

- Cells - Pellet<sup>2</sup> by centrifugation at up to 5,000 x g and remove RNeasy Lysis Buffer (supernatant). Proceed to Sample Preparation, page 6.
- Tissue - Transfer into a new tube with forceps and remove any excess RNeasy Lysis Buffer™. Proceed to Sample Preparation, page 6.

Alternatively, for liquid samples from which RNeasy Lysis Buffer cannot be removed, add 1 volume of nuclease-free water (or PBS) to 1 volume liquid sample (1:1) and mix. Then add 4 volumes **DNA/RNA Lysis Buffer** to 1 volume sample/water (or PBS) mixture (4:1). Mix again and proceed to Purification, page 10.

✓ PAXgene®: Refer to manufacturer's instructions to remove the reagent then proceed to Sample Preparation, Blood Cells, page 7.

✓ Swab samples in UTM®/VTM®, saline or PBS: Remove swab and add 3 volumes of **DNA/RNA Lysis Buffer** to 1 volume sample (3:1). Mix and aliquot every 200  $\mu$ l of mixture into a nuclease-free tube. Proceed to Purification, page 10.

Optional: To inactivate pathogens, store at room temperature prior to purification, add 1 volume **DNA/RNA Shield™** (2X concentrate) to 1 volume liquid sample (1:1) and mix well. Then proceed to Sample Preparation, Samples in **DNA/RNA Shield™**, page 6.

## Liquids/Reaction Clean-up (DNase I treated RNA, in vitro transcriptions, etc.)

Add 150  $\mu$ l **DNA/RNA Lysis Buffer** to a  $\geq 50$   $\mu$ l liquid sample (3:1) and mix well. Proceed to purification, page 10.

1 For a 1X solution of **DNA/RNA Shield™**, see Buffer Preparation, page 5.

2 Different cells may react differently to centrifugation forces, and it is recommended to test the pelleting procedure with non-valuable samples first. Diluting RNeasy Lysis Buffer™ by 50% with cold PBS reduces solution density allowing for lower forces during cell pelleting (e.g., 500 x g).

(Appendices continued)

## **DNase I Treatment (in-column)**

1. Following RNA binding step (page 10, step 2b), add 400  $\mu$ l **DNA/RNA Wash Buffer** to the column, centrifuge and discard the flow-through.
2. To treat each sample, prepare **DNase I Reaction Mix** (see table below) in a nuclease-free tube (not provided) and invert gently to mix.
3. Add 80  $\mu$ l directly into the column matrix and incubate at room temperature (20-30°C) for 15 minutes. Proceed with the purification protocol (page 10, step 3).

### **DNase I Reaction Mix**

**DNase I** (reconstituted; 1 U/ $\mu$ l)<sup>1</sup>

5  $\mu$ l

**DNA Digestion Buffer**

75  $\mu$ l

## **Protein Purification: Acetone Precipitation of Proteins**

- ✓ After the RNA binding to the column (page 10, step 2b), the protein content in the flow-through can be purified:
1. Add 4 volumes of cold acetone (-20°C) to flow-through (4:1) and mix.
  2. Incubate the samples for 30 minutes on ice.
  3. Centrifuge at max speed for 10 minutes. Discard the supernatant. Keep the pellet.
  4. Add 400  $\mu$ l ethanol (95-100%) to the protein pellet. Centrifuge at max speed for 1 minute. Discard the supernatant.
  5. Air-dry the protein pellet for 10 minutes at room temperature.
  6. Resuspend and vortex the pellet in a buffer appropriate for downstream application (e.g., SDS-PAGE sample loading buffer).

## **Homogenization with ZR BashingBead Lysis Tubes**

- ✓ Recommended for complete and efficient homogenization of tough-to-lyse samples (e.g., tissue, plant, seed, microbes, etc.). Lysis tubes sold separately.
- ✓ For high-speed homogenizers (e.g., MP Bio FastPrep-24, Bertin Precellys) and low-speed homogenizers (e.g., Vortex Genie), bead-beating time optimization may be required.

Input	Tissue		Microbes
	Mammalian	Plant/Seed or Insect	Bacteria, Swab, Yeast, Stool/Soil
Cat. no. (lysis bead size)	S6003 (2.0 mm)	S6003 (2.0 mm)	S6012 (0.5 mm and 0.1 mm)
High-speed	30-60 sec	3-5 min	30-60 sec
Low-speed	3-5 min	15-20 min	5-10 min

<sup>1</sup> Unit definition – one unit increases the absorbance of a high molecular weight DNA solution at a rate of 0.001 A<sub>260</sub> units/ml of reaction mixture at 25°C.

# Ordering Information

Product Description	Catalog No.	Size
<b>Quick-DNA/RNA™ Miniprep Plus Kit</b>	D7003T D7003	10 preps 50 preps

Individual Kit Components	Catalog No.	Amount
DNA/RNA Lysis Buffer	D7001-1-50 D7001-1-200	50 ml 200 ml
DNA/RNA Prep Buffer	D7010-2-25 D7010-2-50	25 ml 50 ml
DNA/RNA Wash Buffer (concentrate)	D7010-3-12 D7010-3-24	12 ml 24 ml
DNase/RNase-Free Water	W1001-6 W1001-30	6 ml 30 ml
DNase I Set (lyophilized) (250 U supplied with DNA Digestion Buffer, 4 ml)	E1010	1 set
DNA/RNA Shield™ (2X concentrate)	R1200-25 R1200-125	25 ml 125 ml
PK Digestion Buffer	R1200-1-5 R1200-1-20	5 ml 20 ml
Proteinase K (lyophilized) & Storage Buffer	D3001-2-5 D3001-2-60	5 mg 60 mg
Spin-Away™ Filters	C1006-50-F	50
Zymo-Spin™ IIICG Columns	C1006-50-G	50
Collection Tubes	C1001-50	50

# Complete Your Workflow

- ✓ For tough-to-lyse samples, use ZR BashingBead Lysis Tubes:

## ZR BashingBead Lysis Tubes

2.0 mm beads #S6003	Plant/animal tissue
0.1 + 0.5 mm beads #S6012	Microbes
0.1 + 2.0 mm beads #S6014	Microbes in tissue/insects

- ✓ For isolation of DNA/RNA from any sample:

## Quick-DNA/RNA Plus kits

Microprep Plus #D7005	From 1 cell and up
MagBeads #R2130	Automatable (Tecan, Hamilton, Kingfisher, etc.)

- ✓ For clean-up (purification) and concentration of any RNA sample. (e.g., from the aqueous phase of TRIzol® extractions) or from any enzymatic reaction (e.g., DNase I treated RNA):

## RNA Clean & Concentrator kits

Microprep #R1013-R1014	DNase I Set included
MagBeads #R1082	Automatable (Tecan, Hamilton, Kingfisher, etc.)

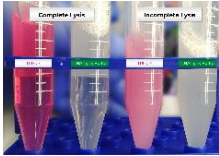
- ✓ For NGS:

## Zymo-Seq RiboFree Total RNA Library Prep kit

#R3000	12 preps
#R3003	96 preps



# Troubleshooting Guide

Problem	Possible Causes and Suggested Solutions
<b>Precipitation, viscous lysate</b>	<p>Incomplete lysis and/or high-mass input:</p> <ul style="list-style-type: none"> <li>- If precipitation occurs (upon adding ethanol to the lysate) or if the lysate is extremely viscous, increase the volume of DNA/RNA Shield™ and/or DNA/RNA Lysis Buffer to ensure complete lysis and homogenization until lysate is transparent (see image).</li> </ul> 
<b>Low purity</b> ( $A_{260}/A_{230}$ nm, $A_{260}/A_{280}$ nm)	<p>Sample handling:</p> <ul style="list-style-type: none"> <li>- Ethanol and/or salt contamination. After centrifugation steps, carefully remove the column from the collection tube to prevent buffer carryover. Alternatively, blot emptied collection tube with a tissue or towel.</li> <li>- Make sure lysate and wash buffers have passed completely through the matrix of the column. This may require centrifuging at a higher speed and/or longer time.</li> </ul> <p>Incomplete lysis and/or cellular debris:</p> <ul style="list-style-type: none"> <li>- Increase the volume DNA/RNA Shield™ and/or DNA/RNA Lysis Buffer (proportionally) to ensure complete lysis and homogenization. Be sure to centrifuge and pellet any cellular debris then process the cleared lysate.</li> </ul>
<b>Low yield</b>	<p>Sample input:</p> <ul style="list-style-type: none"> <li>- Too much input or incomplete lysis/homogenization can cause cellular debris to clog or overload the column and result in compromised nucleic acid recovery. Use less input material and/or increase the volume DNA/RNA Shield™ and/or DNA/RNA Lysis Buffer.</li> </ul> <p>High-protein content (blood, plasma/serum, etc.)</p> <ul style="list-style-type: none"> <li>- Perform Proteinase K treatment to the sample prior to purification. See appropriate sample preparation protocol.</li> </ul>
<b>DNA contamination</b>	<p>To remove DNA:</p> <ul style="list-style-type: none"> <li>- Perform in-column DNase I treatment (page 10) or perform DNase I treatment post-purification, then re-purify the treated sample.</li> <li>- For future preps, increase the volume of DNA/RNA Shield™ and/or DNA/RNA Lysis Buffer to ensure complete lysis and homogenization of the sample.</li> </ul>
<b>RNA degradation</b>	<p>To prevent RNA degradation:</p> <ul style="list-style-type: none"> <li>- Immediately collect and lyse fresh sample into DNA/RNA Shield™ and/or DNA/RNA Lysis Buffer ensure stability. Homogenized samples can be stored frozen for later processing.</li> </ul>

For technical assistance, please contact 1-888-882-9682 or email [tech@zymoresearch.com](mailto:tech@zymoresearch.com)

## Notes

This image shows a single sheet of white paper with horizontal ruling lines. The lines are evenly spaced and run across the width of the page. There are no margins, text, or other markings on the paper.



## **100% satisfaction guarantee on all Zymo Research products, or your money back.**

Zymo Research is committed to simplifying your research with quality products and services. If you are dissatisfied with this product for any reason, please call 1(888) 882-9682.

---

Integrity of kit components is guaranteed for up to one year from date of purchase. Reagents are routinely tested on a lot-to-lot basis to ensure they provide the highest performance and reliability.

This product is for research use only and should only be used by trained professionals. It is not for use in diagnostic procedures. Some reagents included with this kit are irritants. Wear protective gloves and eye protection. Follow the safety guidelines and rules enacted by your research institution or facility.

<sup>TM</sup> Trademarks of Zymo Research Corporation

Quick-DNA/RNA<sup>®</sup> is a registered trademark of Zymo Research Corporation. Other trademarks: TRI Reagent<sup>®</sup>, TRIzol<sup>®</sup> (Molecular Research Center, Inc.), RNAlprotect<sup>®</sup>, Allprotect<sup>®</sup>, PAXgene<sup>®</sup> (Qiagen), RNAlater<sup>®</sup> (Ambion, Inc.), Universal (viral) transport medium (BD, Copan), Bioanalyzer (Agilent Technologies, Inc.).

*The **BEAUTY** of **SCIENCE** is to Make Things **SIMPLE**®*



[tech@zymoresearch.com](mailto:tech@zymoresearch.com)



[www.zymoresearch.com](http://www.zymoresearch.com)



Toll Free: (888) 882-9682