

ENPP2 Polyclonal Antibody

Catalog No.	A16021	Category	Polyclonal Antibodies
Applications	WB	Observed MW	130kDa
Cross-reactivity	Human	Calculated MW	98kDa/101kDa/105kDa

Immunogen Information

Immunogen	Recombinant fusion protein containing a sequence corresponding to amino acids 564-863 of human ENPP2 (NP_001035181.1).
Gene ID	5168
Swiss prot	Q13822
Synonyms	ENPP2; ATX; ATX-X; AUTOTAXIN; LysoPLD; NPP2; P D-IALPHA; PDNP2; ectonucleotide pyrophosphatas e/phosphodiesterase 2

Product information

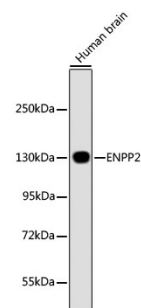
Source	Rabbit
Isotype	IgG
Purification method	Affinity purification
Storage	Store at 4°C. Avoid freeze / thaw cycles. Buffer: PBS with 0.02% sodium azide, 50% glycerol, pH7.3.

Background

The protein encoded by this gene functions as both a phosphodiesterase, which cleaves phosphodiester bonds at the 5' end of oligonucleotides, and a phospholipase, which catalyzes production of lysophosphatidic acid (LPA) in extracellular fluids. LPA evokes growth factor-like responses including stimulation of cell proliferation and chemotaxis. This gene product stimulates the motility of tumor cells and has angiogenic properties, and its expression is upregulated in several kinds of carcinomas. The gene product is secreted and further processed to make the biologically active form. Several alternatively spliced transcript variants encoding different isoforms have been identified.

Recommended Dilutions

WB 1:500 -
1:2000



Western blot - ENPP2 Polyclonal Antibody (A16021)