

CRY1 Polyclonal Antibody

Catalog No.	A13666	Category	Polyclonal Antibodies
Applications	WB, IHC	Observed MW	66kDa
Cross-reactivity	Human, Mouse	Calculated MW	66kDa

Immunogen Information

Immunogen	Recombinant fusion protein containing a sequence corresponding to amino acids 507-586 of human CRY1 (NP_004066.1).
Gene ID	1407
Swiss prot	Q16526
Synonyms	CRY1; PHLL1; DSPD; cryptochrome-1

Product information

Source	Rabbit
Isotype	IgG
Purification method	Affinity purification
Storage	Store at -20°C. Avoid freeze / thaw cycles. Buffer: PBS with 0.02% sodium azide, 50% glycerol, pH7.3.

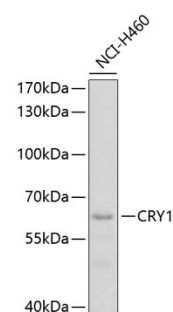
Background

This gene encodes a flavin adenine dinucleotide-binding protein that is a key component of the circadian core oscillator complex, which regulates the circadian clock. This gene is upregulated by CLOCK/ARNTL heterodimers but then represses this upregulation in a feedback loop using PER/CRY heterodimers to interact with CLOCK/ARNTL. Polymorphisms in this gene have been associated with altered sleep patterns. The encoded protein is widely conserved across plants and animals. Loss of the related gene in mouse results in a shortened circadian cycle in complete darkness.

Recommended Dilutions

WB 1:500 -
1:2000

IHC 1:50 -
1:200



Western blot - CRY1 Polyclonal Antibody (A13666)