

## FGL1 Polyclonal Antibody

<b>Catalog No.</b>	A10977	<b>Category</b>	Polyclonal Antibodies
<b>Applications</b>	WB, IHC	<b>Observed MW</b>	36kDa
<b>Cross-reactivity</b>	Human, Mouse, Rat	<b>Calculated MW</b>	36kDa

### Immunogen Information

<b>Immunogen</b>	A synthetic Peptide of human FGL1
<b>Gene ID</b>	2267
<b>Swiss prot</b>	Q08830
<b>Synonyms</b>	FGL1; HFREP1; HP-041; LFIRE-1; LFIRE1; fibrinogen like 1

### Product information

<b>Source</b>	Rabbit
<b>Isotype</b>	IgG
<b>Purification method</b>	Affinity purification
<b>Storage</b>	Store at -20°C. Avoid freeze / thaw cycles. Buffer: PBS with 0.02% sodium azide, 50% glycerol, pH7.3.

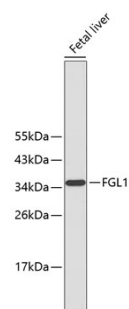
### Background

Fibrinogen-like 1 is a member of the fibrinogen family. This protein is homologous to the carboxy terminus of the fibrinogen beta- and gamma- subunits which contains the four conserved cysteines of fibrinogens and fibrinogen related proteins. However, this protein lacks the platelet-binding site, cross-linking region and a thrombin-sensitive site which are necessary for fibrin clot formation. This protein may play a role in the development of hepatocellular carcinomas. Four alternatively spliced transcript variants encoding the same protein exist for this gene.

### Recommended Dilutions

WB 1:500 -  
1:2000

IHC 1:50 -  
1:200



Western blot - FGL1 Polyclonal Antibody (A10977)