

## CDC25A Polyclonal Antibody

|                         |                   |                      |                       |
|-------------------------|-------------------|----------------------|-----------------------|
| <b>Catalog No.</b>      | A5527             | <b>Category</b>      | Polyclonal Antibodies |
| <b>Applications</b>     | WB                | <b>Observed MW</b>   | 70kDa                 |
| <b>Cross-reactivity</b> | Human, Mouse, Rat | <b>Calculated MW</b> | 54kDa/59kDa           |

### Immunogen Information

|                   |  |
|-------------------|--|
| <b>Immunogen</b>  | A synthetic peptide of human CDC25A      |
| <b>Gene ID</b>    | 993                                      |
| <b>Swiss prot</b> | P30304                                   |
| <b>Synonyms</b>   | CDC25A; CDC25A2; cell division cycle 25A |

### Product information

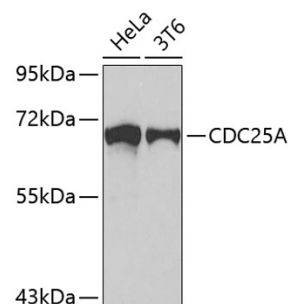
|                            |  |
|----------------------------|--|
| <b>Source</b>              | Rabbit   |
| <b>Isotype</b>             | IgG  |
| <b>Purification method</b> | Affinity purification  |
| <b>Storage</b>             | Store at -20°C. Avoid freeze / thaw cycles.<br>Buffer: PBS with 0.02% sodium azide, 50% glycerol, pH7.3. |

### Background

CDC25A is a member of the CDC25 family of phosphatases. CDC25A is required for progression from G1 to the S phase of the cell cycle. It activates the cyclin-dependent kinase CDC2 by removing two phosphate groups. CDC25A is specifically degraded in response to DNA damage, which prevents cells with chromosomal abnormalities from progressing through cell division. CDC25A is an oncogene, although its exact role in oncogenesis has not been demonstrated. Two transcript variants encoding different isoforms have been found for this gene.

### Recommended Dilutions

WB 1:500 -  
1:1000



Western blot - CDC25A Polyclonal Antibody (A5527)