

ALDOC Polyclonal Antibody

Catalog No.	A11618	Category	Polyclonal Antibodies
Applications	WB	Observed MW	39kDa
Cross-reactivity	Human, Mouse, Rat	Calculated MW	39kDa

Immunogen Information

Immunogen	Recombinant fusion protein containing a sequence corresponding to amino acids 1-170 of human ALDOC (NP_005156.1).
Gene ID	230
Swiss prot	P09972
Synonyms	ALDOC; ALDC; fructose-bisphosphate aldolase C

Product information

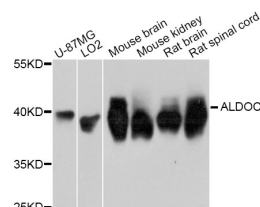
Source	Rabbit
Isotype	IgG
Purification method	Affinity purification
Storage	Store at -20°C. Avoid freeze / thaw cycles. Buffer: PBS with 0.02% sodium azide, 50% glycerol, pH7.3.

Background

This gene encodes a member of the class I fructose-biphosphate aldolase gene family. Expressed specifically in the hippocampus and Purkinje cells of the brain, the encoded protein is a glycolytic enzyme that catalyzes the reversible aldol cleavage of fructose-1,6-biphosphate and fructose 1-phosphate to dihydroxyacetone phosphate and either glyceraldehyde-3-phosphate or glyceraldehyde, respectively.

Recommended Dilutions

WB 1:500 -
1:2000



Western blot - ALDOC Polyclonal Antibody (A11618)