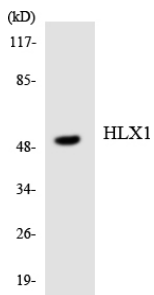


## Anti-HLX1 Antibody (A98096)

### Specifications:

|                        |  |
|------------------------|--|
| Name:                  | Anti-HLX1 Antibody   |
| Description:           | Rabbit polyclonal antibody to HLX1.  |
| Applications:          | WB, ELISA  |
| Recommended Dilutions: | WB: 1:500-1:1000, ELISA: 1:10000   |
| Reactivity:            | Human, Mouse, Rat  |
| Immunogen:             | Synthetic peptide derived from human HLX1 (amino acids 289-338).   |
| Host:                  | Rabbit   |
| Clonality:             | Polyclonal   |
| Isotype:               | IgG  |
| Conjugate:             | Unconjugated   |
| Purification:          | Purified from rabbit serum by antigen affinity chromatography using the immunizing peptide.  |
| Molecular Weight:      | 50kDa  |
| Product Form:          | Liquid   |
| Formulation:           | Supplied in Phosphate Buffered Saline (without Mg <sup>2+</sup> and Ca <sup>2+</sup> ), pH 7.4, with 150mM NaCl, 0.02% Sodium Azide, and 50% Glycerol. |
| Storage:               | Shipped at 4°C. Upon delivery aliquot and store at -20°C. Avoid freeze / thaw cycles.  |
| Disclaimer:            | This product is for research use only. It is not intended for diagnostic or therapeutic use.   |

### Images:



Western blot analysis of the lysates from HeLa cells using Anti-HLX1 Antibody.