

## Phospho-PAK1-T212 pAb

<b>Catalog No.</b>	AP0555	<b>Category</b>	Phosphorylated Antibodies
<b>Applications</b>	WB	<b>Observed MW</b>	61kDa
<b>Cross-reactivity</b>	Human	<b>Calculated MW</b>	60kDa/61kDa

### Immunogen Information

<b>Immunogen</b>	A phospho specific peptide corresponding to residues surrounding T212 of human PAK1
<b>Gene ID</b>	5058
<b>Swiss prot</b>	Q13153
<b>Synonyms</b>	PAK1; PAKalpha; p21 (RAC1) activated kinase 1

### Product information

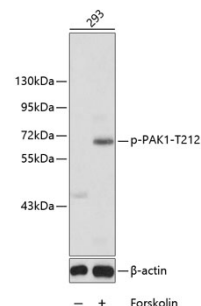
<b>Source</b>	Rabbit
<b>Isotype</b>	IgG
<b>Purification method</b>	Affinity purification
<b>Storage</b>	Store at -20°C. Avoid freeze / thaw cycles. Buffer: PBS with 0.02% sodium azide, 50% glycerol, pH7.3.

### Background

This gene encodes a family member of serine/threonine p21-activating kinases, known as PAK proteins. These proteins are critical effectors that link RhoGTPases to cytoskeleton reorganization and nuclear signaling, and they serve as targets for the small GTP binding proteins Cdc42 and Rac. This specific family member regulates cell motility and morphology. Alternatively spliced transcript variants encoding different isoforms have been found for this gene.

### Recommended Dilutions

WB 1:500 -  
1:2000



Western blot - Phospho-PAK1-T212 pAb (AP0555)