

## CELF1 Polyclonal Antibody

<b>Catalog No.</b>	A5958	<b>Category</b>	Polyclonal Antibodies
<b>Applications</b>	WB	<b>Observed MW</b>	52kDa
<b>Cross-reactivity</b>	Human, Mouse	<b>Calculated MW</b>	50kDa/51kDa/52kDa/55kDa

### Immunogen Information

<b>Immunogen</b>	Recombinant fusion protein containing a sequence corresponding to amino acids 108-483 of human CELF1 (NP_941989.1).
<b>Gene ID</b>	10658
<b>Swiss prot</b>	Q92879
<b>Synonyms</b>	CELF1; BRUNOL2; CUG-BP; CUGBP; CUGBP1; EDEN-BP ; NAB50; NAPOR; hNab50; CUGBP Elav-like family member 1

### Product information

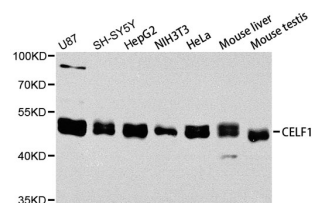
<b>Source</b>	Rabbit
<b>Isotype</b>	IgG
<b>Purification method</b>	Affinity purification
<b>Storage</b>	Store at -20°C. Avoid freeze / thaw cycles. Buffer: PBS with 0.02% sodium azide, 50% glycerol, pH7.3.

### Background

Members of the CELF/BRUNOL protein family contain two N-terminal RNA recognition motif (RRM) domains, one C-terminal RRM domain, and a divergent segment of 160-230 aa between the second and third RRM domains. Members of this protein family regulate pre-mRNA alternative splicing and may also be involved in mRNA editing, and translation. This gene may play a role in myotonic dystrophy type 1 (DM1) via interactions with the dystrophin myotonic-protein kinase (DMPK) gene. Alternative splicing results in multiple transcript variants encoding different isoforms.

### Recommended Dilutions

WB 1:200 -  
1:2000



Western blot - CELF1 Polyclonal Antibody (A5958)