

BAG1 Polyclonal Antibody

Catalog No.	A1104	Category	Polyclonal Antibodies
Applications	WB, IHC, IF	Observed MW	43kDa
Cross-reactivity	Human, Mouse	Calculated MW	25kDa/31kDa/34kDa/38kDa

Immunogen Information

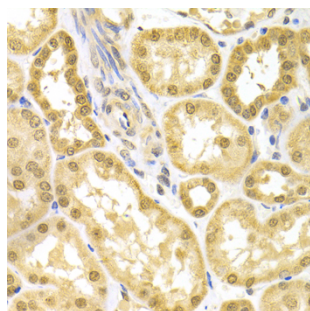
Immunogen	Recombinant fusion protein containing a sequence corresponding to amino acids 1-230 of human BAG1 (NP_001165886.1).
Gene ID	573
Swiss prot	Q99933
Synonyms	BAG1; BAG-1; HAP; RAP46; BCL2 associated athanogene 1

Product information

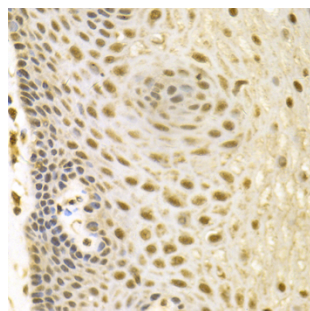
Source	Rabbit
Isotype	IgG
Purification method	Affinity purification
Storage	Store at -20°C. Avoid freeze / thaw cycles. Buffer: PBS with 0.02% sodium azide, 50% glycerol, pH7.3.

Background

The oncogene BCL2 is a membrane protein that blocks a step in a pathway leading to apoptosis or programmed cell death. The protein encoded by this gene binds to BCL2 and is referred to as BCL2-associated athanogene. It enhances the anti-apoptotic effects of BCL2 and represents a link between growth factor receptors and anti-apoptotic mechanisms. Multiple protein isoforms are encoded by this mRNA through the use of a non-AUG (CUG) initiation codon, and three alternative downstream AUG initiation codons. A related pseudogene has been defined on chromosome X.



Immunohistochemistry - BAG1 Polyclonal Antibody (A1104)



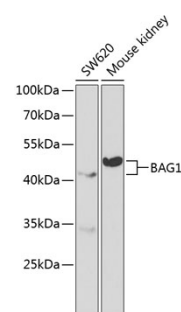
Immunohistochemistry - BAG1 Polyclonal Antibody (A1104)

Recommended Dilutions

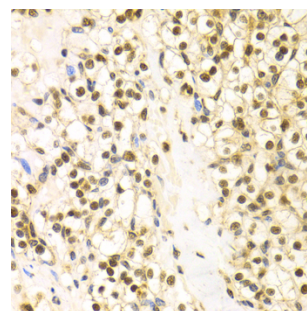
WB 1:500 -
1:2000

IHC 1:50 -
1:200

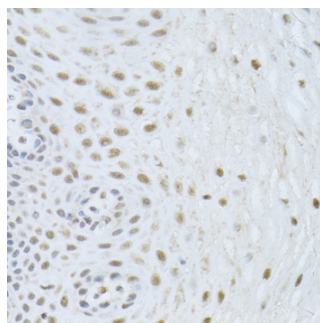
IF 1:20 -
1:100



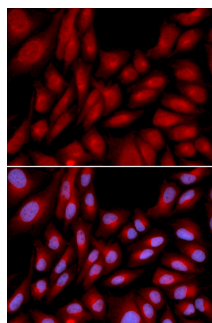
Western blot - BAG1 Polyclonal Antibody (A1104)



Immunohistochemistry - BAG1 Polyclonal Antibody (A1104)



Immunohistochemistry - BAG1 Polyclonal Antibody (A1104)



Immunofluorescence - BAG1 Polyclonal Antibody (A1104)