

## METTL1 Polyclonal Antibody

<b>Catalog No.</b>	A16651	<b>Category</b>	Polyclonal Antibodies
<b>Applications</b>	WB	<b>Observed MW</b>	37kDa
<b>Cross-reactivity</b>	Human	<b>Calculated MW</b>	17kDa/31kDa

### Immunogen Information

<b>Immunogen</b>	Recombinant fusion protein containing a sequence corresponding to amino acids 1-276 of human METTL1 (NP_005362.3).
<b>Gene ID</b>	4234
<b>Swiss prot</b>	Q9UBP6
<b>Synonyms</b>	METTL1; C12orf1; TRM8; TRMT8; YDL201w; methyltransferase like 1

### Product information

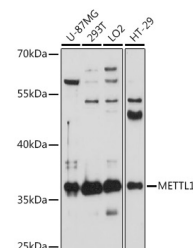
<b>Source</b>	Rabbit
<b>Isotype</b>	IgG
<b>Purification method</b>	Affinity purification
<b>Storage</b>	Store at -20°C. Avoid freeze / thaw cycles. Buffer: PBS with 0.02% sodium azide, 50% glycerol, pH7.3.

### Background

This gene is similar in sequence to the *S. cerevisiae* YDL201w gene. The gene product contains a conserved S-adenosylmethionine-binding motif and is inactivated by phosphorylation. Alternative splice variants encoding different protein isoforms have been described for this gene. A pseudogene has been identified on chromosome X.

### Recommended Dilutions

WB 1:500 -  
1:2000



Western blot - METTL1 Polyclonal Antibody (A16651)