

## MAT2A Polyclonal Antibody

<b>Catalog No.</b>	A8436	<b>Category</b>	Polyclonal Antibodies
<b>Applications</b>	WB	<b>Observed MW</b>	44kDa
<b>Cross-reactivity</b>	Human, Mouse, Rat	<b>Calculated MW</b>	32kDa/43kDa

### Immunogen Information

<b>Immunogen</b>	Recombinant fusion protein containing a sequence corresponding to amino acids 1-395 of human MAT2A (NP_005902.1).
<b>Gene ID</b>	4144
<b>Swiss prot</b>	P31153
<b>Synonyms</b>	MAT2A; MATA2; MATII; SAMS2; methionine adenosyltransferase 2A

### Product information

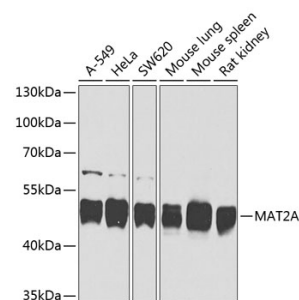
<b>Source</b>	Rabbit
<b>Isotype</b>	IgG
<b>Purification method</b>	Affinity purification
<b>Storage</b>	Store at -20°C. Avoid freeze / thaw cycles. Buffer: PBS with 0.02% sodium azide, 50% glycerol, pH7.3.

### Background

The protein encoded by this gene catalyzes the production of S-adenosylmethionine (AdoMet) from methionine and ATP. AdoMet is the key methyl donor in cellular processes.

### Recommended Dilutions

WB 1:500 -  
1:2000



Western blot - MAT2A Polyclonal Antibody (A8436)