

## ADRA1B Polyclonal Antibody

<b>Catalog No.</b>	A7872	<b>Category</b>	Polyclonal Antibodies
<b>Applications</b>	WB	<b>Observed MW</b>	50kDa
<b>Cross-reactivity</b>	Human, Mouse, Rat	<b>Calculated MW</b>	56kDa

### Immunogen Information

<b>Immunogen</b>	A synthetic peptide of human ADRA1B
<b>Gene ID</b>	147
<b>Swiss prot</b>	P35368
<b>Synonyms</b>	ADRA1B; ADRA1; ALPHA1BAR; adrenoceptor alpha 1 B

### Product information

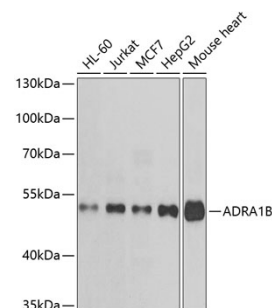
<b>Source</b>	Rabbit
<b>Isotype</b>	IgG
<b>Purification method</b>	Affinity purification
<b>Storage</b>	Store at -20°C. Avoid freeze / thaw cycles. Buffer: PBS with 0.02% sodium azide, 50% glycerol, pH7.3.

### Background

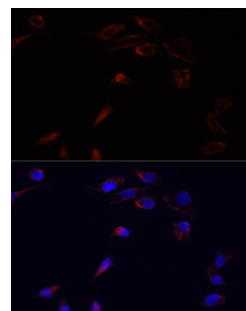
Alpha-1-adrenergic receptors (alpha-1-ARs) are members of the G protein-coupled receptor superfamily. They activate mitogenic responses and regulate growth and proliferation of many cells. There are 3 alpha-1-AR subtypes: alpha-1A, -1B and -1D, all of which signal through the Gq/11 family of G-proteins and different subtypes show different patterns of activation. This gene encodes alpha-1B-adrenergic receptor, which induces neoplastic transformation when transfected into NIH 3T3 fibroblasts and other cell lines. Thus, this normal cellular gene is identified as a protooncogene. This gene comprises 2 exons and a single large intron of at least 20 kb that interrupts the coding region.

### Recommended Dilutions

WB 1:500 -  
1:2000



Western blot - ADRA1B Polyclonal Antibody (A7872)



Immunofluorescence - ADRA1B Polyclonal Antibody (A7872)