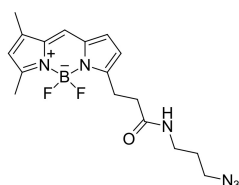


## BDP FL azide (A270091)

### Specifications:

Name:	BDP FL azide
Description:	BDP FL azide is an analog of BODIPY® FL azide, a Click-chemistry capable bright and photostable dye for FAM channel. This green-emitting fluorophore is compatible with all types of fluorescence measuring instruments for FAM (fluorescein) and dyes like Alexa® Fluor 488. The fluorophore is a representative of borondipyrromethene class of fluorescent dyes, which possess high quantum yields in aqueous environments, and high stability towards photobleaching.
Absorption Maxima:	503 nm
Extinction Coefficient:	92000 M <sup>-1</sup> cm <sup>-1</sup>
Emission Maxima:	509 nm
Fluorescence Quantum Yield:	0.97
CAS Number:	1379771-95-5, 2243566-18-7
CF <sub>260</sub> :	0.015
CF <sub>280</sub> :	0.027
Purity:	95% (by <sup>1</sup> H NMR and HPLC-MS).
Molecular Formula:	C <sub>17</sub> H <sub>21</sub> BF <sub>2</sub> N <sub>6</sub> O
Molecular Weight:	374.20 kDa
Product Form:	Orange solid.
Solubility:	Soluble in organic solvents (alcohols, DMF, DMSO).
Storage:	Shipped at room temperature. Upon delivery, store in the dark at -20°C. Avoid prolonged exposure to light.
Disclaimer:	This product is for research use only. It is not intended for diagnostic or therapeutic use.

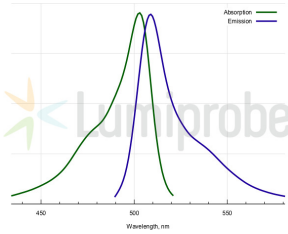
### Images:



Structure of BODIPY FL azide.

## BDP FL azide (A270091)

Images continued:



Absorption and emission spectra of BDP FL.