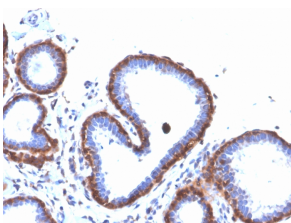


# Anti-Ferritin Light Chain Antibody [FTL/3872R] - BSA and Azide free (A251836)

## Specifications:

Name:	Anti-Ferritin Light Chain Antibody [FTL/3872R] - BSA and Azide free
Description:	Recombinant rabbit monoclonal [FTL/3872R] antibody to Ferritin Light Chain.
Applications:	WB, IHC-P
Recommended Dilutions:	WB: 2-4 µg/ml, IHC-P: 1-2 µg/ml
Reactivity:	Human
Immunogen:	Recombinant full-length human FTL protein.
Host:	Rabbit
Clonality:	Monoclonal
Clone ID:	FTL/3872R
Isotype:	IgG
Conjugate:	Unconjugated
Purification:	Protein A/G chromatography.
Concentration:	1 mg/ml
Product Form:	Liquid
Formulation:	Supplied in 10mM Phosphate Buffered Saline; without Sodium Azide and carrier free.
Storage:	Shipped at 4°C. Upon delivery aliquot and store at -20°C. Avoid freeze / thaw cycles.
General Notes:	This monoclonal antibody is also available in a different formulation with BSA and Sodium Azide - Anti-Ferritin Light Chain Antibody [FTL/3872R] (A248654).
Disclaimer:	This product is for research use only. It is not intended for diagnostic or therapeutic use.

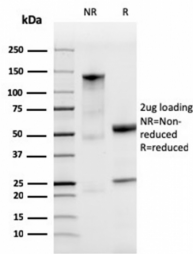
## Images:



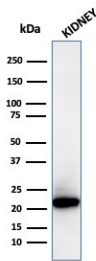
Immunohistochemical analysis of formalin-fixed, paraffin-embedded human breast carcinoma using Anti-Ferritin Light Chain Antibody [FTL/3872R].

Anti-Ferritin Light Chain Antibody [FTL/3872R] - BSA and Azide free (A251836)

Images continued:



SDS-PAGE analysis of Anti-Ferritin Light Chain Antibody [FTL/3872R] under non-reduced and reduced conditions; showing intact IgG and intact heavy and light chains, respectively. SDS-PAGE analysis confirms the integrity and purity of the antibody.



Western blot analysis of human kidney tissue lysate using Anti-Ferritin Light Chain Antibody [FTL/3872R].