

PAA647Mu01**Polyclonal Antibody to Mothers Against Decapentaplegic Homolog 1 (Smad1)****Organism Species: Mus musculus (Mouse)****Instruction manual**

FOR IN VITRO USE AND RESEARCH USE ONLY

NOT FOR USE IN CLINICAL DIAGNOSTIC PROCEDURES

9th Edition (Revised in Jul, 2013)

[PRODUCT INFORMATION]**Immunogen:** Smad1, Mouse**Clonality:** Polyclonal**Host:** Rabbit**Immunoglobulin Type:** IgG**Purification:** Affinity Chromatography.**Applications:** WB, ICC, IHC-P, IHC-F, ELISA**Concentration:** 200µg/mL**UOM:** 100µg**[IMMUNOGEN INFORMATION]****Immunogen:** Recombinant Smad1 (Trp271~Ser465) expressed in *E.coli*.**Accession No.:** RPA647Mu01**Sequence:** The target protein is fused with two N-terminal Tags, His-tag and T7-tag and its sequence is listed below.MGSSHHHHHH SSGLVPRGSH MASMTGGQQM GRGS- WCSIVYYELN NRVGEAFHAS
STSVLVDGFT DPSNNKNRFC LGLLSNVNRN STIENTRRHI GKGVHLYYVG GEVYAECLSD
SSIFVQSRNC NYHHGFHPTT VCKIPSGCSL KIFNNQEFAQ LLAQSVNHGF ETVYELTKMC
TIRMSFVKGW GAEYHRQDVT STPCWIEIHL HGPLQWLDKV LTQMGSPHNP ISSVS**[ANTIBODY SPECIFICITY]**

The antibody is a rabbit polyclonal antibody raised against Smad1. It has been selected for its ability to recognize Smad1 in immunohistochemical staining and western blotting.

[APPLICATIONS]

Western blotting: 1:100-400

Immunocytochemistry in formalin fixed cells: 1:100-500

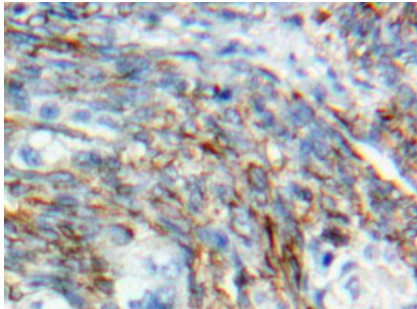
Immunohistochemistry in formalin fixed frozen section: 1:100-500

Immunohistochemistry in paraffin section: 1:50-200

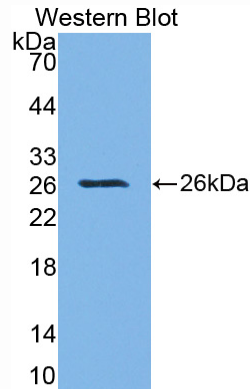
Enzyme-linked Immunosorbent Assay: 1:100-200

Optimal working dilutions must be determined by end user.

[IMAGES]



Used in DAB staining on formalin fixed
paraffin-embedded Ovary tissue



Used in Western Blot, Sample:
Recombinant Smad1, Mouse

[CONTENTS]

Form & Buffer: Supplied as solution form in PBS, pH7.4, containing 0.02% NaN_3 , 50% glycerol.

[QUALITY CONTROL]

Content: The quality control contains recombinant Smad1 (Trp271~Ser465) disposed in loading buffer.

Usage: 10uL per well when 3,3'-Diaminobenzidine(DAB) as the substrate.
5uL per well when used in enhanced chemiluminescent (ECL).

Note: The quality control is specifically manufactured as the positive control. Not used for other purposes.

Loading Buffer: 100mM Tris(pH8.8), 2% SDS, 200mM NaCl, 50% glycerol, BPB 0.01%, NaN_3 0.02%.

[STORAGE]

Store at 4°C for frequent use. Stored at -20°C to -80°C in a manual defrost freezer for one year without detectable loss of activity. Avoid repeated freeze-thaw cycles.