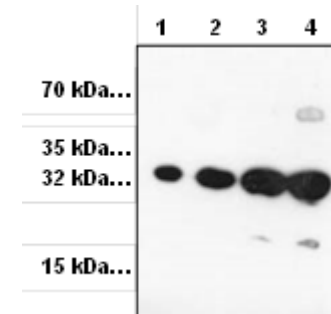


## Red Fluorescence Protein (RFP) Polyclonal Antibody

<b>CATALOG #:</b>	3993-100
<b>AMOUNT:</b>	100 µg
<b>HOST:</b>	Rabbit
<b>IMMUNOGEN:</b>	Recombinant RFP expressed from E. coli (Internal ID# BV-806, Cat # 4997)
<b>SPECIES:</b>	All
<b>FORMULATION:</b>	100 µg (0.5 mg/ml) affinity purified rabbit anti-RFP polyclonal antibody in phosphate buffered saline (PBS), pH 7.2, containing 30% glycerol, 0.5% BSA and 0.01% thimerosal.
<b>STORAGE CONDITIONS:</b>	Store at -20°C. For long-term storage, aliquot and freeze at -70°C. Avoid repeated freeze/thaw cycles.
<b>DESCRIPTION:</b>	Since the molecular cloning of GFP cDNA and demonstration of GFP as a functional transgene, GFP has become a powerful tool with exciting applications in developmental, cell and molecular biology. RFP is the recently discovered protein that has the similar function and applications as GFP. Either GFP or RFP fluorescence is not species specific and can be expressed in bacteria, yeast, plant and mammalian cells. GFP or RFP can fuse with proteins of interest without interfering significantly with their assembly and function.
<b>APPLICATION AND USAGE:</b>	The antibody can be used for Western blotting (0.5-4 µg/ml). Based on researchers' feedback, it can also be used in immunoprecipitation (10-20 µg/ml) and immunofluorescence. However, the optimal conditions should be determined individually. Recombinant RFP (Cat.# 4997-100) is also available separately.



### Western blot with RFP Polyclonal Antibody – Cat # 3993-100

All lanes loaded with Recombinant RFP protein – Cat # 4997.

Lane 1: 10 ng  
Lane 2: 50 ng  
Lane 3: 250 ng  
Lane 4: 1 µg

Blocking/Dilution buffer: 5% NFDM (1 hr at RT) / TBST

RFP Polyclonal Antibody used at 1:1000 dilution - O/N at 4°C.

Goat Anti-Rabbit IgG peroxidase conjugated used at 1:10,000 dilution – 1 hr at RT

Predicted band size: 27.6 kDa.

Observed band size: ~32 kDa.

The protein runs larger on a SDS PAGE gel. Refer to the Cat # 4997 for details.

### RELATED PRODUCTS:

- Fluorescent Protein Set (Cat # K816-6-100)
- Blue Fluorescent Protein (BFP) (Cat # 4994-100, -1000, -5000)
- Cyan Fluorescent Protein (Cat # 4996-100, -1000, -5000)
- Enhanced Green Fluorescent Protein (EGFP) (Cat # 4999-100, -1000, -5000)
- Yellow Fluorescent Protein (Cat # 4998-100, -1000, -5000)

**FOR RESEARCH USE ONLY! Not to be used in human subjects.**