

PLIN2 Polyclonal Antibody

Catalog No.	A6276	Category	Polyclonal Antibodies
Applications	WB	Observed MW	48kDa
Cross-reactivity	Human, Mouse, Rat	Calculated MW	48kDa

Immunogen Information

Immunogen Recombinant fusion protein containing a sequence corresponding to amino acids 168-437 of human PLIN2 (NP_001113.2).

Gene ID 123

Swiss prot Q99541

Synonyms PLIN2; ADFP; ADRP; perilipin-2

Product information

Source Rabbit

Isotype IgG

Purification method Affinity purification

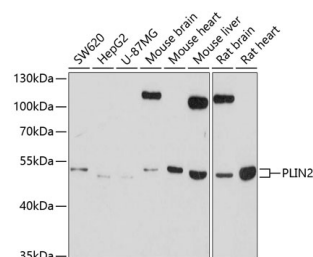
Storage Store at -20°C. Avoid freeze / thaw cycles.
Buffer: PBS with 0.02% sodium azide, 50% glycerol, pH7.3.

Background

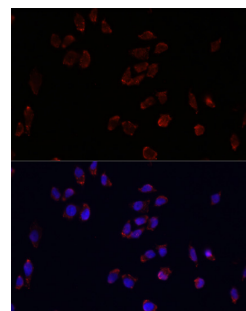
The protein encoded by this gene belongs to the perilipin family, members of which coat intracellular lipid storage droplets. This protein is associated with the lipid globule surface membrane material, and maybe involved in development and maintenance of adipose tissue. However, it is not restricted to adipocytes as previously thought, but is found in a wide range of cultured cell lines, including fibroblasts, endothelial and epithelial cells, and tissues, such as lactating mammary gland, adrenal cortex, Sertoli and Leydig cells, and hepatocytes in alcoholic liver cirrhosis, suggesting that it may serve as a marker of lipid accumulation in diverse cell types and diseases. Alternatively spliced transcript variants have been found for this gene.

Recommended Dilutions

WB 1:500 -
1:2000



Western blot - PLIN2 Polyclonal Antibody (A6276)



Immunofluorescence - PLIN2 Polyclonal Antibody (A6276)