

## BANK1 Polyclonal Antibody

<b>Catalog No.</b>	A10312	<b>Category</b>	Polyclonal Antibodies
<b>Applications</b>	WB	<b>Observed MW</b>	89kDa
<b>Cross-reactivity</b>	Human, Mouse, Rat	<b>Calculated MW</b>	73kDa/86kDa/88kDa/89kDa

### Immunogen Information

<b>Immunogen</b>	Recombinant fusion protein containing a sequence corresponding to amino acids 516-785 of human BANK1 (NP_060405.4).
<b>Gene ID</b>	55024
<b>Swiss prot</b>	Q8NDB2
<b>Synonyms</b>	BANK1; BANK; B-cell scaffold protein with ankyrin repeats

### Product information

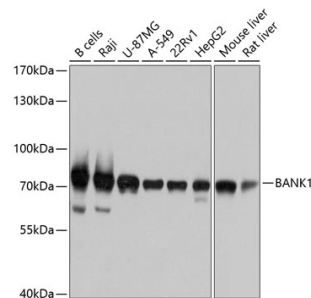
<b>Source</b>	Rabbit
<b>Isotype</b>	IgG
<b>Purification method</b>	Affinity purification
<b>Storage</b>	Store at -20°C. Avoid freeze / thaw cycles. Buffer: PBS with 0.02% sodium azide, 50% glycerol, pH7.3.

### Background

The protein encoded by this gene is a B-cell-specific scaffold protein that functions in B-cell receptor-induced calcium mobilization from intracellular stores. This protein can also promote Lyn-mediated tyrosine phosphorylation of inositol 1,4,5-trisphosphate receptors. Polymorphisms in this gene are associated with susceptibility to systemic lupus erythematosus. Alternative splicing results in multiple transcript variants.

### Recommended Dilutions

WB 1:1000 -  
1:2000



Western blot - BANK1 Polyclonal Antibody (A10312)