

RPP25L Polyclonal Antibody

Catalog No.	A9889	Category	Polyclonal Antibodies
Applications	WB	Observed MW	18kDa
Cross-reactivity	Human	Calculated MW	17kDa

Immunogen Information

Immunogen	Recombinant fusion protein containing a sequence corresponding to amino acids 1-163 of human RPP25L (NP_680544.1).
Gene ID	138716
Swiss prot	Q8N5L8
Synonyms	RPP25L; C9orf23; bA296L22.5; ribonuclease P/MR P subunit p25 like

Product information

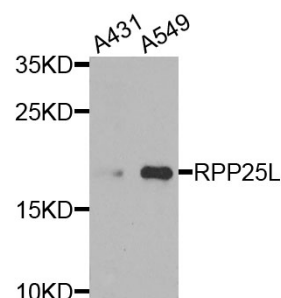
Source	Rabbit
Isotype	IgG
Purification method	Affinity purification
Storage	Store at -20°C. Avoid freeze / thaw cycles. Buffer: PBS with 0.02% sodium azide, 50% glycerol, pH7.3.

Background

This gene encodes a protein that appears to belong to a family of evolutionarily related proteins (DUF78), that may share one or more domains in common. Members of this family are small archaeobacterial proteins with no known function. Alternative splicing has been observed at this locus and two variants, both encoding the same protein, have been identified.

Recommended Dilutions

WB 1:500 -
1:2000



Western blot - RPP25L Polyclonal Antibody (A9889)