

ABCA2 Polyclonal Antibody

Catalog No.	A16735	Category	Polyclonal Antibodies
Applications	WB	Observed MW	270kDa
Cross-reactivity	Mouse	Calculated MW	230kDa/269kDa

Immunogen Information

Immunogen	Recombinant Protein of human ABCA2
Gene ID	20
Swiss prot	Q9BZC7
Synonyms	ABCA2; ABC2; ATP binding cassette subfamily A member 2

Product information

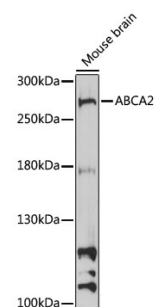
Source	Rabbit
Isotype	IgG
Purification method	Affinity purification
Storage	Store at -20°C. Avoid freeze / thaw cycles. Buffer: PBS with 0.02% sodium azide, pH7.3.

Background

The membrane-associated protein encoded by this gene is a member of the superfamily of ATP-binding cassette (ABC) transporters. ABC proteins transport various molecules across extra- and intracellular membranes. ABC genes are divided into seven distinct subfamilies (ABC1, MDR/TAP, MRP, ALD, OABP, GCN20, White). This protein is a member of the ABC1 subfamily. Members of the ABC1 subfamily comprise the only major ABC subfamily found exclusively in multicellular eukaryotes. This protein is highly expressed in brain tissue and may play a role in macrophage lipid metabolism and neural development. Two transcript variants encoding different isoforms have been found for this gene.

Recommended Dilutions

WB 1:500 -
1:1000



Western blot - ABCA2 Polyclonal Antibody (A16735)