

## LATS2 Polyclonal Antibody

<b>Catalog No.</b>	A16249	<b>Category</b>	Polyclonal Antibodies
<b>Applications</b>	WB	<b>Observed MW</b>	150kDa
<b>Cross-reactivity</b>	Human, Mouse	<b>Calculated MW</b>	120kDa

### Immunogen Information

<b>Immunogen</b>	A synthetic peptide corresponding to a sequence within amino acids 1-100 of human LATS2 (NP_055387.2).
<b>Gene ID</b>	26524
<b>Swiss prot</b>	Q9NRM7
<b>Synonyms</b>	LATS2; KPM; large tumor suppressor kinase 2

### Product information

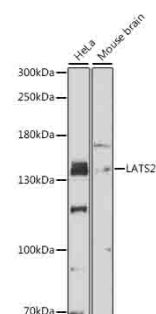
<b>Source</b>	Rabbit
<b>Isotype</b>	IgG
<b>Purification method</b>	Affinity purification
<b>Storage</b>	Store at -20°C. Avoid freeze / thaw cycles. Buffer: PBS with 0.02% sodium azide, 50% glycerol, pH7.3.

### Background

This gene encodes a serine/threonine protein kinase belonging to the LATS tumor suppressor family. The protein localizes to centrosomes during interphase, and early and late metaphase. It interacts with the centrosomal proteins aurora-A and ajuba and is required for accumulation of gamma-tubulin and spindle formation at the onset of mitosis. It also interacts with a negative regulator of p53 and may function in a positive feedback loop with p53 that responds to cytoskeleton damage. Additionally, it can function as a co-repressor of androgen-responsive gene expression.

### Recommended Dilutions

WB 1:500 -  
1:2000



Western blot - LATS2 Polyclonal Antibody (A16249)