

PADI2 Polyclonal Antibody

Catalog No.	A12236	Category	Polyclonal Antibodies
Applications	WB	Observed MW	75kDa
Cross-reactivity	Human	Calculated MW	49kDa/75kDa

Immunogen Information

Immunogen	Recombinant fusion protein containing a sequence corresponding to amino acids 1-200 of human PADI2 (NP_031391.2).
Gene ID	11240
Swiss prot	Q9Y2J8
Synonyms	PADI2; PAD-H19; PAD2; PDI2; peptidyl arginine deiminase 2

Product information

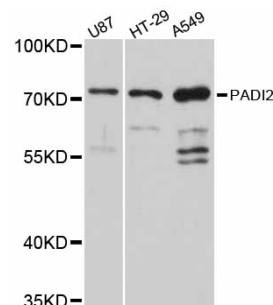
Source	Rabbit
Isotype	IgG
Purification method	Affinity purification
Storage	Store at -20°C. Avoid freeze / thaw cycles. Buffer: PBS with 0.02% sodium azide, 50% glycerol, pH7.3.

Background

This gene encodes a member of the peptidyl arginine deiminase family of enzymes, which catalyze the post-translational deimination of proteins by converting arginine residues into citrullines in the presence of calcium ions. The family members have distinct substrate specificities and tissue-specific expression patterns. The type II enzyme is the most widely expressed family member. Known substrates for this enzyme include myelin basic protein in the central nervous system and vimentin in skeletal muscle and macrophages. This enzyme is thought to play a role in the onset and progression of neurodegenerative human disorders, including Alzheimer disease and multiple sclerosis, and it has also been implicated in glaucoma pathogenesis. This gene exists in a cluster with four other paralogous genes.

Recommended Dilutions

WB 1:500 -
1:2000



Western blot - PADI2 Polyclonal Antibody (A12236)