

## TCF12 Polyclonal Antibody

<b>Catalog No.</b>	A4146	<b>Category</b>	Polyclonal Antibodies
<b>Applications</b>	WB	<b>Observed MW</b>	68kDa
<b>Cross-reactivity</b>	Human, Mouse, Rat	<b>Calculated MW</b>	48kDa/55kDa/72kDa/75kDa

### Immunogen Information

<b>Immunogen</b>	Recombinant fusion protein containing a sequence corresponding to amino acids 443-682 of human TCF12 (NP_003196.1).
<b>Gene ID</b>	6938
<b>Swiss prot</b>	Q99081
<b>Synonyms</b>	TCF12; CRS3; HEB; HTF4; HsT17266; TCF-12; bHLH b20; transcription factor 12

### Product information

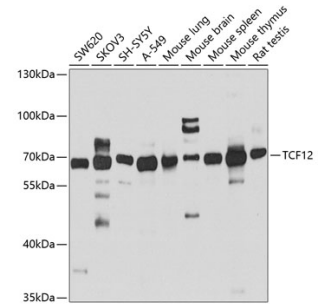
<b>Source</b>	Rabbit
<b>Isotype</b>	IgG
<b>Purification method</b>	Affinity purification
<b>Storage</b>	Store at -20°C. Avoid freeze / thaw cycles. Buffer: PBS with 0.02% sodium azide, 50% glycerol, pH7.3.

### Background

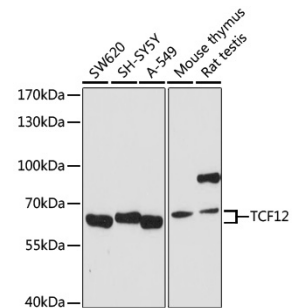
The protein encoded by this gene is a member of the basic helix-loop-helix (bHLH) E-protein family that recognizes the consensus binding site (E-box) CANNTG. This encoded protein is expressed in many tissues, among them skeletal muscle, thymus, B- and T-cells, and may participate in regulating lineage-specific gene expression through the formation of heterodimers with other bHLH E-proteins. Several alternatively spliced transcript variants of this gene have been described, but the full-length nature of some of these variants has not been determined.

### Recommended Dilutions

WB 1:200 -  
1:1000



Western blot - TCF12 Polyclonal Antibody (A4146)



Western blot - TCF12 Polyclonal Antibody (A4146)