

## ENPP6 Polyclonal Antibody

<b>Catalog No.</b>	A12290	<b>Category</b>	Polyclonal Antibodies
<b>Applications</b>	WB	<b>Observed MW</b>	50kDa
<b>Cross-reactivity</b>	Human, Mouse	<b>Calculated MW</b>	50kDa

### Immunogen Information

<b>Immunogen</b>	Recombinant fusion protein containing a sequence corresponding to amino acids 91-440 of human ENPP6 (NP_699174.1).
<b>Gene ID</b>	133121
<b>Swiss prot</b>	Q6UWR7
<b>Synonyms</b>	ENPP6; NPP6; ectonucleotide pyrophosphatase/phosphodiesterase 6

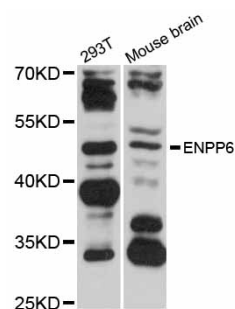
### Product information

<b>Source</b>	Rabbit
<b>Isotype</b>	IgG
<b>Purification method</b>	Affinity purification
<b>Storage</b>	Store at -20°C. Avoid freeze / thaw cycles. Buffer: PBS with 0.02% sodium azide, 50% glycerol, pH7.3.

### Background

### Recommended Dilutions

WB 1:500 -  
1:2000



Western blot - ENPP6 Polyclonal Antibody (A12290)