

HSPD1 Monoclonal Antibody

Catalog No.	A10906	Category	Monoclonal Antibodies
Applications	WB, IHC	Observed MW	60kDa
Cross-reactivity	Human, Mouse, Rat	Calculated MW	17kDa/61kDa

Immunogen Information

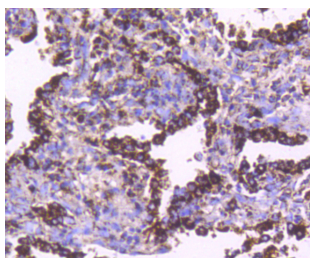
Immunogen	Recombinant protein of human HSPD1
Gene ID	3329
Swiss prot	P10809
Synonyms	HSPD1; CPN60; GROEL; HLD4; HSP-60; HSP60; HSP65; HuCHA60; SPG13; 60 kDa heat shock protein, mitochondrial

Product information

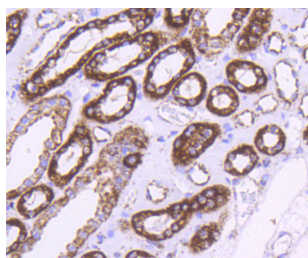
Source	Rabbit
Isotype	IgG
Purification method	Affinity purification
Storage	Store at -20°C. Avoid freeze / thaw cycles. Buffer: PBS with 0.02% sodium azide, 50% glycerol, pH7.3.

Background

This gene encodes a member of the chaperonin family. The encoded mitochondrial protein may function as a signaling molecule in the innate immune system. This protein is essential for the folding and assembly of newly imported proteins in the mitochondria. This gene is adjacent to a related family member and the region between the 2 genes functions as a bidirectional promoter. Several pseudogenes have been associated with this gene. Two transcript variants encoding the same protein have been identified for this gene. Mutations associated with this gene cause autosomal recessive spastic paraplegia 13.



Immunohistochemistry - HSPD1 Monoclonal Antibody (A10906)

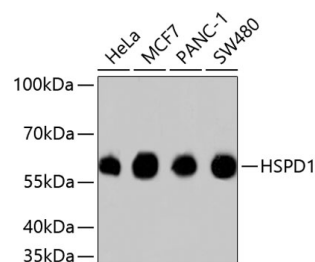


Immunohistochemistry - HSPD1 Monoclonal Antibody (A10906)

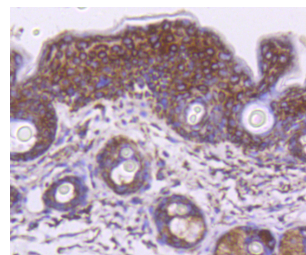
Recommended Dilutions

WB 1:500 -
1:2000

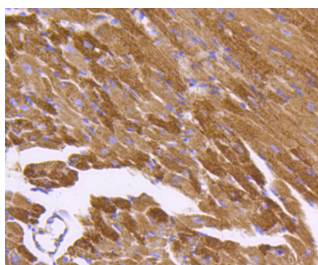
IHC 1:50 -
1:200



Western blot - HSPD1 Monoclonal Antibody (A10906)



Immunohistochemistry - HSPD1 Monoclonal Antibody (A10906)



Immunohistochemistry - HSPD1
Monoclonal Antibody (A10906)