

SEMA7A Polyclonal Antibody

Catalog No.	A12039	Category	Polyclonal Antibodies
Applications	WB	Observed MW	80kDa
Cross-reactivity	Human	Calculated MW	73kDa/74kDa

Immunogen Information

Immunogen	Recombinant fusion protein containing a sequence corresponding to amino acids 45-280 of human SEMA7A (NP_003603.1).
Gene ID	8482
Swiss prot	O75326
Synonyms	SEMA7A; CD108; CDw108; H-SEMA-K1; H-Sema-L; JM H; SEMAK1; SEMAL; semaphorin-7A

Product information

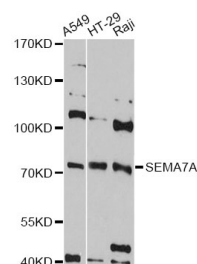
Source	Rabbit
Isotype	IgG
Purification method	Affinity purification
Storage	Store at -20°C. Avoid freeze / thaw cycles. Buffer: PBS with 0.02% sodium azide, 50% glycerol, pH7.3.

Background

This gene encodes a member of the semaphorin family of proteins. The encoded preproprotein is proteolytically processed to generate the mature glycosylphosphatidylinositol (GPI)-anchored membrane glycoprotein. The encoded protein is found on activated lymphocytes and erythrocytes and may be involved in immunomodulatory and neuronal processes. The encoded protein carries the John Milton Hagen (JMH) blood group antigens. Mutations in this gene may be associated with reduced bone mineral density (BMD). Alternative splicing results in multiple transcript variants, at least one of which encodes an isoform that is proteolytically processed.

Recommended Dilutions

WB 1:500 -
1:1000



Western blot - SEMA7A Polyclonal Antibody (A12039)