

## OLFM1 Polyclonal Antibody

<b>Catalog No.</b>	A0261	<b>Category</b>	Polyclonal Antibodies
<b>Applications</b>	WB	<b>Observed MW</b>	72kDa
<b>Cross-reactivity</b>	Human, Mouse	<b>Calculated MW</b>	15-17kDa/52-55kDa

### Immunogen Information

<b>Immunogen</b>	Recombinant fusion protein containing a sequence corresponding to amino acids 90-220 of human OLFM1 (NP_055094.1).
<b>Gene ID</b>	10439
<b>Swiss prot</b>	Q99784
<b>Synonyms</b>	OLFM1; AMY; NOE1; NOELIN1; OlfA; noelin

### Product information

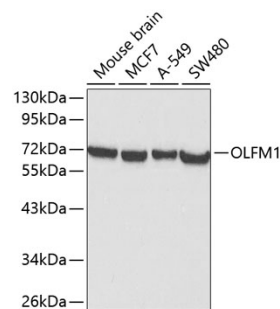
<b>Source</b>	Rabbit
<b>Isotype</b>	IgG
<b>Purification method</b>	Affinity purification
<b>Storage</b>	Store at -20°C. Avoid freeze / thaw cycles. Buffer: PBS with 0.02% sodium azide, 50% glycerol, pH7.3.

### Background

This gene product shares extensive sequence similarity with the rat neuronal olfactomedin-related ER localized protein. While the exact function of the encoded protein is not known, its abundant expression in brain suggests that it may have an essential role in nerve tissue. Several alternatively spliced transcripts encoding different isoforms have been found for this gene.

### Recommended Dilutions

WB 1:500 -  
1:2000



Western blot - OLFM1 Polyclonal Antibody (A0261)